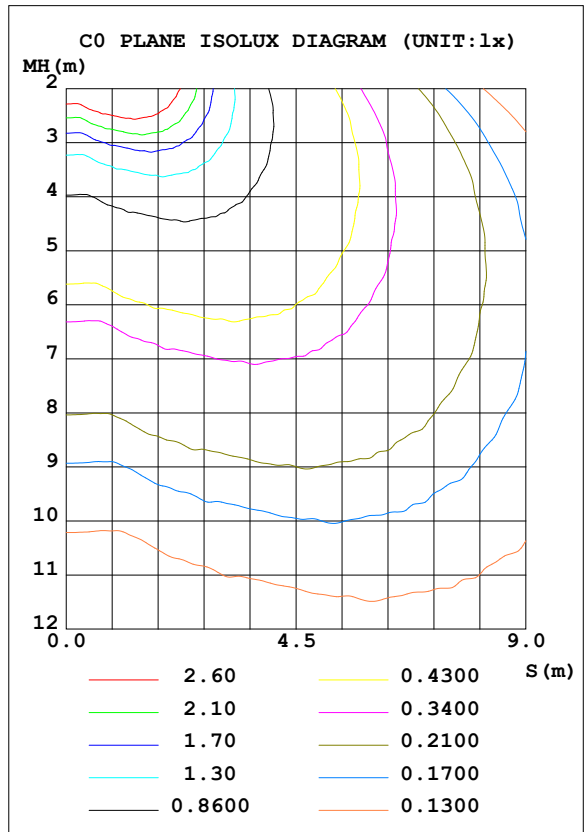
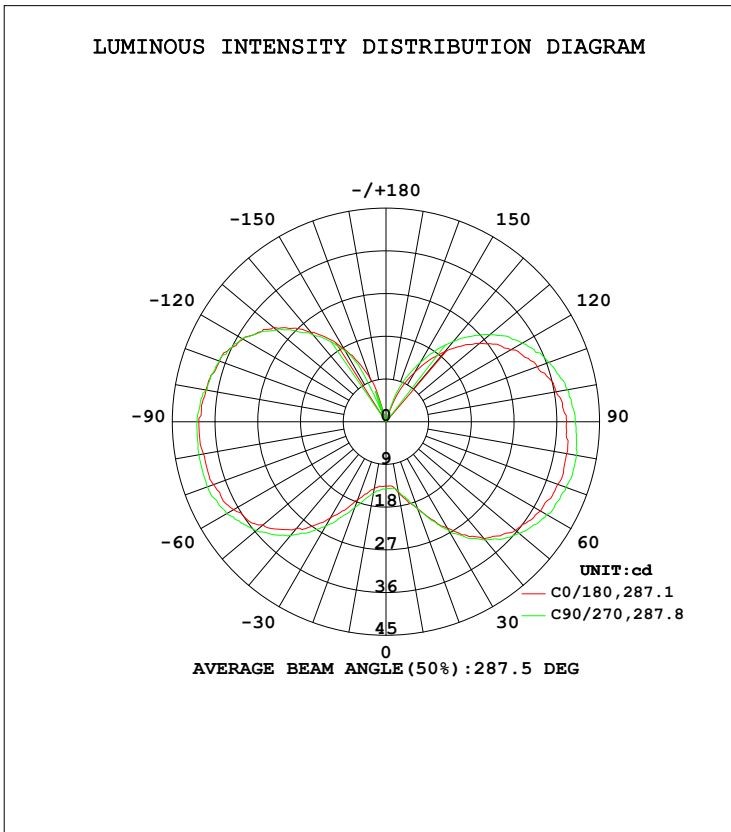


LUMINAIRE PHOTOMETRIC TEST REPORT

Test:U:230.20V I:0.0189A P:4.0425W PF:0.9268 Freq:50.00Hz Lamp Flux:399.291x1 lm		
NAME:	TYPE:	WEIGHT:N/A
SPEC.:N/A	DIM.: N/A	SERIAL No.:
MFR.:	SUR.:	Shielding Angle:

DATA OF LAMP		PHOTOMETRIC DATA Eff: 98.77 lm/W			
MODEL	SPARAC-G9-4W-TGE1-3	I _{max} (cd)	41.81	S/MH (C0/180)	2.84
NOMINAL POWER (W)	4	LOR (%)	100.0	S/MH (C90/270)	2.82
RATED VOLTAGE (V)	220-240	TOTAL FLUX (lm)	399.29	<input checked="" type="checkbox"/> UP, DN (C0-180)	22.7,27.3
NOMINAL FLUX (lm)	399.291	CIE CLASS	DIFFUSE	<input checked="" type="checkbox"/> UP, DN (C180-360)	23.0,27.0
LAMPS INSIDE	1	<input checked="" type="checkbox"/> up (%)	45.7	CIBSE SHR NOM	2.00
TEST VOLTAGE (V)	230	<input checked="" type="checkbox"/> down (%)	54.3	CIBSE SHR MAX	2.00



C Range: 0 - 360DEG
 C Interval: 22.5DEG
 Test Speed: HIGH
 Temperature: 24.9DEG
 Operators: Link Chai
 Test Date: 2022-07-19

Range: 0 - 180DEG
 Interval: 1.0DEG
 Test System: EVERFINE GO-R5000_V2 SYSTEM V2.0.366
 Humidity: 60%
 Test Distance: 26.000m [K=1.4046]
 Remarks:

ZONAL FLUX DIAGRAM

ZONAL FLUX DIAGRAM:

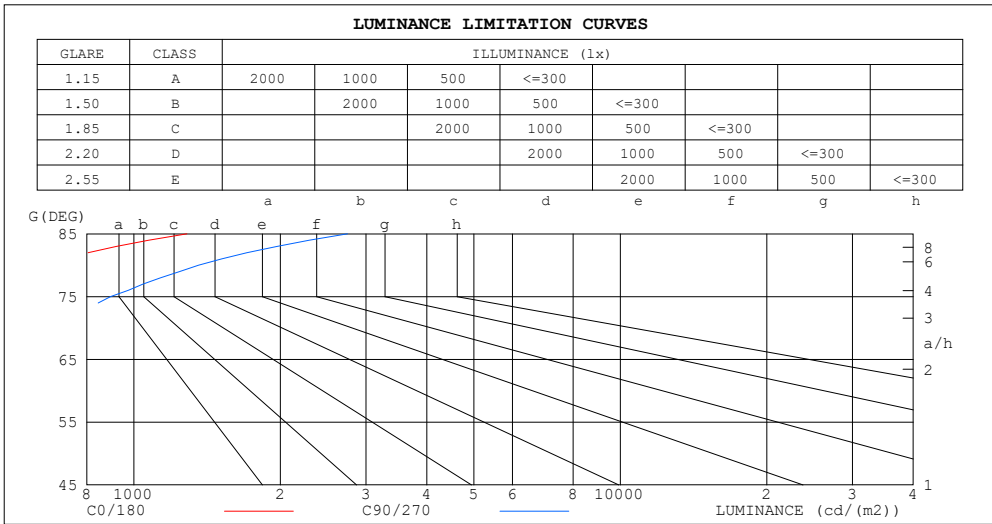
°	C0	C45	C90	C135	C180	C225	C270	C315	°	zone	total	%lum, lamp
10	7.210	7.793	7.697	7.396	7.503	8.581	9.160	8.382	0- 10	0.7309	0.7309	0.42,0.42
20	8.376	10.13	10.32	8.086	8.479	11.02	11.89	10.13	10- 20	2.553	3.284	1.89,1.89
30	9.370	12.76	13.34	9.698	9.643	13.45	14.72	11.40	20- 30	5.024	8.308	4.79,4.79
40	10.06	15.19	15.88	11.00	10.33	15.88	17.16	12.67	30- 40	7.958	16.27	9.38,9.38
50	10.84	17.05	18.41	12.10	10.81	17.93	19.68	13.93	40- 50	11.11	27.37	15.8,15.8
60	11.00	19.08	20.74	12.96	11.11	19.78	22.12	14.71	50- 60	14.16	41.53	24,24
70	11.20	20.65	22.60	13.91	11.11	21.14	23.58	14.67	60- 70	16.84	58.37	33.7,33.7
80	11.20	21.65	23.58	14.22	10.90	21.25	24.11	14.63	70- 80	18.57	76.94	44.4,44.4
90	11.20	21.79	23.92	14.15	10.86	21.22	24.16	14.63	80- 90	19.36	96.30	55.5,55.5
100	11.20	21.15	23.78	14.09	10.81	20.73	22.99	13.95	90-100	19.15	115.4	66.6,66.6
110	10.47	19.29	22.02	13.74	10.03	18.99	21.14	12.57	100-110	17.72	133.2	76.8,76.8
120	9.065	17.25	19.68	12.57	9.125	17.04	18.60	10.91	110-120	15.04	148.2	85.5,85.5
130	7.599	14.03	16.47	10.52	7.598	13.93	15.00	8.669	120-130	11.67	159.9	92.2,92.2
140	5.368	10.73	12.58	8.484	6.229	10.52	11.19	6.138	130-140	7.780	167.7	96.7,96.7
150	0	6.340	8.283	5.655	3.798	6.428	7.014	3.117	140-150	4.322	172.0	99.2,99.2
160	0	0.0005	1.563	1.870	1.354	1.554	0.2921	0	150-160	1.334	173.3	100,100
170	0	0	0	0	0	0	0	0	160-170	0.0417	173.4	100,100
180	0	0	0	0	0	0	0	0	170-180	0	173.4	100,100
DEG	LUMINOUS INTENSITY:cd									UNIT:lm		

C Range: 0 - 360DEG
 C Interval: 22.5DEG
 Test Speed: HIGH
 Temperature:24.9DEG
 Operators:Link Chai
 Test Date:2022-07-19

☑ Range: 0 - 180DEG
 ☑ Interval: 1.0DEG
 Test System:EVERFINE GO-R5000_V2 SYSTEM V2.0.366
 Humidity:60%
 Test Distance:26.000m [K=1.4046]
 Remarks:

LUMINANCE LIMITATION CURVES

Test:U:12.036V I:0.1821A P:1.4725W PF:0.6720 Freq:50.01Hz Lamp Flux:173.36x1 lm		
NAME :	TYPE:LED	WEIGHT:N/A
SPEC.:N/A	DIM.: N/A	SERIAL No.:
MFR.:	SUR.:	Shielding Angle:



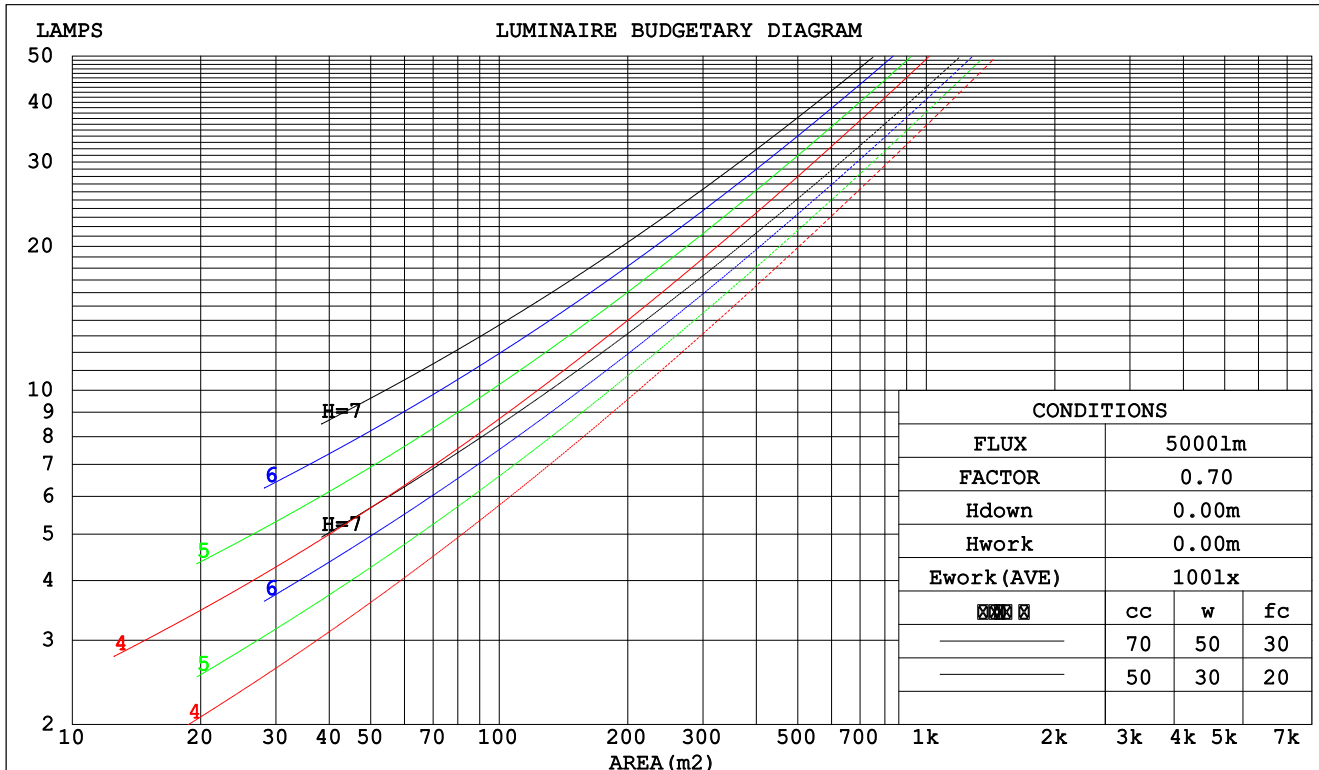
LUMINANCE cd/ (m2)		
G (DEG)	C0/180	C90/270
85	1286	2748
80	645	1358
75	433	896
70	328	661
65	264	516
60	220	415
55	190	338
50	169	286
45	150	241

<p>C Range: 0 - 360DEG C Interval: 22.5DEG Test Speed: HIGH Temperature:24.9DEG Operators:Link Chai Test Date:2022-07-19</p>	<p><input checked="" type="checkbox"/> Range: 0 - 180DEG <input checked="" type="checkbox"/> Interval: 1.0DEG Test System:EVERFINE GO-R5000_V2 SYSTEM V2.0.366 Humidity:60% Test Distance:26.000m [K=1.4046] Remarks:</p>
-----------------------------------------------------------------------------------------------------------------------------------------------------------------------------------------------	------------------------------------------------------------------------------------------------------------------------------------------------------------------------------------------------------------------------------------------------------------------------------------

CU AND LUMINAIRE BUDGETARY ESTIMATE DIAGRAM

Test:U:12.036V I:0.1821A P:1.4725W PF:0.6720 Freq:50.01Hz Lamp Flux:173.36x1 lm		
NAME:	TYPE:LED	WEIGHT:N/A
SPEC.:N/A	DIM.: N/A	SERIAL No.:
MFR.:	SUR.:	Shielding Angle:

cc	80%			70%			50%			30%			10%			0
	w	fc		w	fc		w	fc		w	fc		w	fc		
	50%	30%	10%	50%	30%	10%	50%	30%	10%	50%	30%	10%	50%	30%	10%	0
	20%			20%			20%			20%			20%			0
RCR	RCR:Room Cavity Ratio						Coefficients of Utilization(CU)									
0.0	1.08	1.08	1.08	1.01	1.01	1.01	.86	.86	.86	.73	.73	.73	.61	.61	.61	.56
1.0	.87	.81	.75	.80	.74	.70	.67	.63	.59	.56	.53	.50	.45	.43	.40	.35
2.0	.73	.64	.57	.67	.59	.53	.56	.50	.45	.46	.41	.37	.37	.33	.30	.25
3.0	.62	.52	.45	.57	.48	.42	.48	.41	.35	.39	.34	.29	.31	.27	.23	.19
4.0	.54	.44	.36	.49	.41	.34	.41	.34	.29	.34	.28	.23	.26	.22	.18	.15
5.0	.47	.37	.30	.43	.35	.28	.36	.29	.24	.29	.24	.19	.23	.19	.15	.12
6.0	.42	.32	.26	.38	.30	.24	.32	.25	.20	.26	.21	.16	.21	.16	.13	.10
7.0	.37	.28	.22	.34	.26	.20	.29	.22	.17	.24	.18	.14	.19	.14	.11	.08
8.0	.34	.25	.19	.31	.23	.17	.26	.19	.15	.21	.16	.12	.17	.13	.09	.07
9.0	.31	.22	.16	.28	.21	.15	.24	.17	.13	.20	.14	.11	.16	.11	.08	.06
10.0	.28	.20	.15	.26	.18	.13	.22	.16	.11	.18	.13	.09	.14	.10	.07	.05



C Range: 0 - 360DEG
 C Interval: 22.5DEG
 Test Speed: HIGH
 Temperature:24.9DEG
 Operators:Link Chai
 Test Date:2022-07-19

Range: 0 - 180DEG
 Interval: 1.0DEG
 Test System:EVERFINE GO-R5000_V2 SYSTEM V2.0.366
 Humidity:60%
 Test Distance:26.000m [K=1.4046]
 Remarks:

WEC AND CCEC

Test:U:12.036V I:0.1821A P:1.4725W PF:0.6720 Freq:50.01Hz Lamp Flux:173.36x1 lm		
NAME:	TYPE:LED	WEIGHT:N/A
SPEC.:N/A	DIM.: N/A	SERIAL No.:
MFR.:	SUR.:	Shielding Angle:

<input checked="" type="checkbox"/> cc	80%			70%			50%			30%			10%			0
<input checked="" type="checkbox"/> w	50%	30%	10%	50%	30%	10%	50%	30%	10%	50%	30%	10%	50%	30%	10%	0
<input checked="" type="checkbox"/> fc	20%			20%			20%			20%			20%			0
RCR	RCR:Room Cavity Ratio						Wall Exitance Coefficients(WEC)									
0.0																
1.0	.437	.248	.079	.416	.237	.075	.377	.216	.069	.341	.197	.063	.308	.178	.058	
2.0	.361	.198	.061	.342	.188	.058	.306	.170	.053	.273	.153	.048	.243	.137	.043	
3.0	.312	.166	.050	.295	.158	.048	.262	.142	.043	.232	.127	.039	.204	.113	.035	
4.0	.276	.144	.042	.261	.136	.040	.231	.122	.037	.203	.109	.033	.177	.096	.029	
5.0	.248	.127	.037	.234	.120	.035	.206	.107	.032	.181	.095	.028	.157	.084	.025	
6.0	.226	.113	.032	.212	.107	.031	.187	.096	.028	.163	.085	.025	.141	.074	.022	
7.0	.207	.102	.029	.194	.097	.028	.171	.086	.025	.149	.076	.022	.129	.067	.020	
8.0	.191	.093	.026	.179	.088	.025	.158	.079	.022	.137	.070	.020	.118	.061	.018	
9.0	.177	.086	.024	.166	.081	.023	.146	.072	.020	.127	.064	.018	.109	.055	.016	
10.0	.165	.079	.022	.155	.075	.021	.136	.067	.019	.119	.059	.017	.102	.051	.015	

<input checked="" type="checkbox"/> cc	80%			70%			50%			30%			10%			0
<input checked="" type="checkbox"/> w	50%	30%	10%	50%	30%	10%	50%	30%	10%	50%	30%	10%	50%	30%	10%	0
<input checked="" type="checkbox"/> fc	20%			20%			20%			20%			20%			0
RCR	RCR:Room Cavity Ratio						Ceiling Cavity Exitance Coefficients(CCEC)									
0.0	.529	.529	.529	.452	.452	.452	.309	.309	.309	.177	.177	.177	.057	.057	.057	
1.0	.531	.497	.466	.454	.426	.401	.311	.293	.277	.179	.170	.161	.057	.055	.052	
2.0	.525	.475	.433	.450	.409	.375	.308	.283	.261	.178	.165	.153	.057	.053	.050	
3.0	.518	.460	.414	.444	.397	.359	.305	.276	.252	.176	.161	.148	.057	.052	.049	
4.0	.511	.449	.401	.438	.388	.349	.301	.270	.246	.174	.158	.145	.056	.052	.048	
5.0	.503	.440	.393	.432	.380	.342	.298	.266	.241	.172	.156	.143	.056	.051	.047	
6.0	.496	.432	.387	.426	.374	.337	.294	.262	.238	.171	.154	.142	.055	.050	.047	
7.0	.489	.426	.382	.420	.369	.333	.290	.259	.236	.169	.153	.141	.055	.050	.046	
8.0	.482	.421	.379	.415	.365	.330	.287	.256	.234	.167	.151	.140	.054	.050	.046	
9.0	.476	.416	.376	.410	.361	.328	.284	.254	.233	.165	.150	.139	.054	.049	.046	
10.0	.470	.412	.374	.405	.358	.327	.281	.252	.232	.164	.149	.138	.053	.049	.046	

C Range: 0 - 360DEG
 C Interval: 22.5DEG
 Test Speed: HIGH
 Temperature:24.9DEG
 Operators:Link Chai
 Test Date:2022-07-19

Range: 0 - 180DEG
 Interval: 1.0DEG
 Test System:EVERFINE GO-R5000_V2 SYSTEM V2.0.366
 Humidity:60%
 Test Distance:26.000m [K=1.4046]
 Remarks:

UGR(Unified Glare Rating) Table

Test:U:12.036V I:0.1821A P:1.4725W PF:0.6720 Freq:50.01Hz Lamp Flux:173.36x1 lm										
NAME:					TYPE:LED			WEIGHT:N/A		
SPEC.:N/A					DIM.: N/A			SERIAL No.:		
MFR.:					SUR.:			Shielding Angle:		
ceiling/cavity	0.7	0.7	0.5	0.5	0.3	0.7	0.7	0.5	0.5	0.3
walls	0.5	0.3	0.5	0.3	0.3	0.5	0.3	0.5	0.3	0.3
working plane	0.2	0.2	0.2	0.2	0.2	0.2	0.2	0.2	0.2	0.2
Room dimensions	Viewed crosswise					Viewed endwise				
x = 2H y = 2H	4.9	6.1	5.7	6.9	8.0	7.5	8.6	8.3	9.5	10.5
3H	7.8	8.9	8.7	9.8	10.9	11.1	12.2	11.9	13.0	14.1
4H	9.5	10.5	10.3	11.4	12.5	13.1	14.1	14.0	15.0	16.1
6H	11.3	12.2	12.1	13.1	14.3	15.3	16.2	16.1	17.1	18.3
8H	12.3	13.2	13.1	14.1	15.2	16.5	17.4	17.4	18.3	19.5
12H	13.4	14.3	14.3	15.2	16.4	17.8	18.7	18.7	19.6	20.8
4H 2H	6.8	7.8	7.6	8.7	9.8	8.4	9.4	9.2	10.3	11.4
3H	9.8	10.7	10.7	11.6	12.8	12.2	13.1	13.1	14.0	15.1
4H	11.5	12.3	12.4	13.3	14.4	14.4	15.2	15.3	16.1	17.3
6H	13.4	14.1	14.3	15.0	16.2	16.7	17.4	17.6	18.4	19.6
8H	14.4	15.0	15.3	16.0	17.2	18.0	18.7	18.9	19.6	20.9
12H	15.5	16.2	16.5	17.1	18.3	19.5	20.1	20.4	21.1	22.3
8H 4H	12.9	13.6	13.8	14.6	15.8	14.9	15.6	15.9	16.6	17.8
6H	15.1	15.6	16.0	16.6	17.9	17.6	18.2	18.6	19.2	20.4
8H	16.2	16.7	17.2	17.7	19.0	19.2	19.7	20.1	20.7	21.9
12H	17.5	18.0	18.5	19.0	20.3	20.9	21.3	21.8	22.3	23.6
12H 4H	13.4	14.0	14.3	15.0	16.2	15.1	15.7	16.0	16.7	17.9
6H	15.7	16.2	16.7	17.2	18.5	17.9	18.4	18.8	19.4	20.7
8H	17.0	17.5	18.0	18.5	19.8	19.5	20.0	20.5	21.0	22.3
Variations with the observer position at spacings:										
S = 1.0H	+ 0.1 / - 0.1					+ 0.1 / - 0.1				
1.5H	+ 0.2 / - 0.3					+ 0.2 / - 0.3				
2.0H	+ 0.3 / - 0.5					+ 0.3 / - 0.4				

CIE Pub.117, 173.4 lm Total Lamp Luminous Flux Corrected (8log(F/F0) = -6.1)

C Range: 0 - 360DEG
 C Interval: 22.5DEG
 Test Speed: HIGH
 Temperature:24.9DEG
 Operators:Link Chai
 Test Date:2022-07-19

Range: 0 - 180DEG
 Interval: 1.0DEG
 Test System:EVERFINE GO-R5000_V2 SYSTEM V2.0.366
 Humidity:60%
 Test Distance:26.000m [K=1.4046]
 Remarks:

UTILIZATION FACTORS TABLE

Test:U:12.036V I:0.1821A P:1.4725W PF:0.6720 Freq:50.01Hz Lamp Flux:173.36x1 lm		
NAME:	TYPE:LED	WEIGHT:N/A
SPEC.:N/A	DIM.: N/A	SERIAL No.:
MFR.:	SUR.:	Shielding Angle:

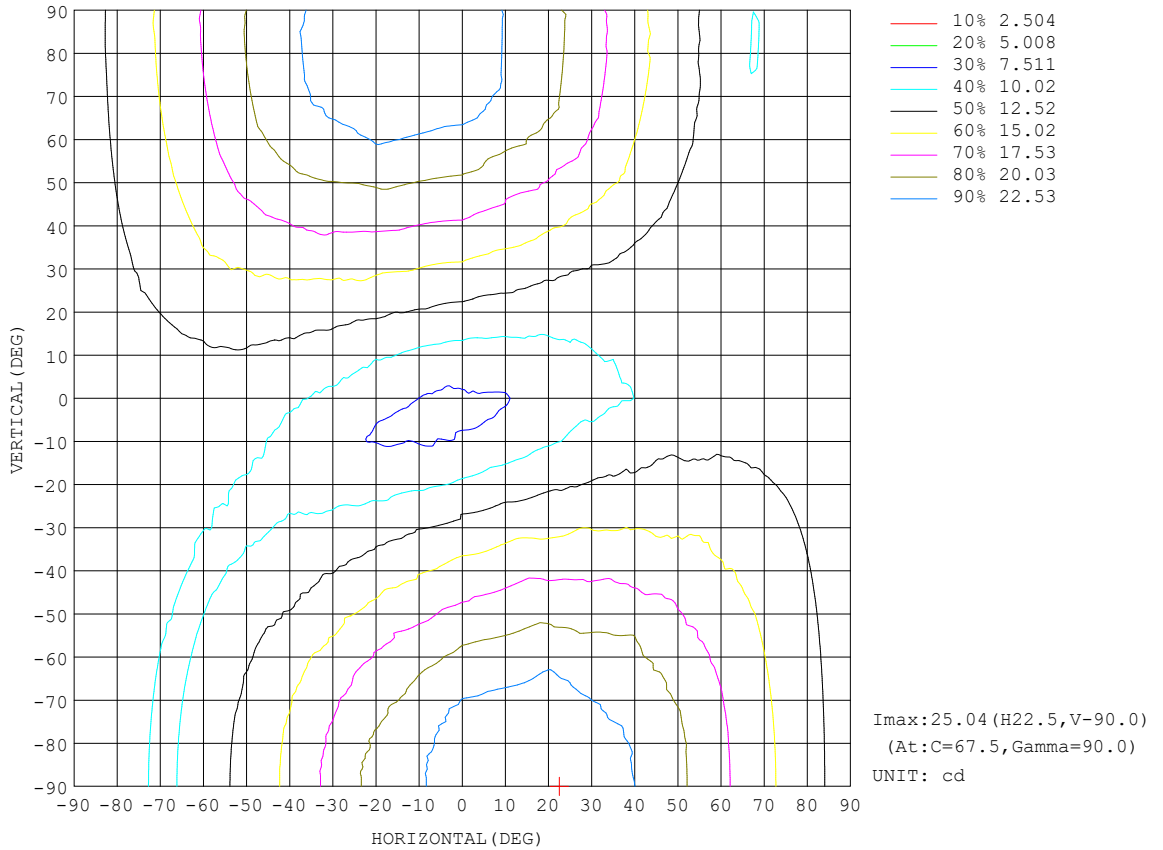
REFLECTANCE										
Ceiling	0.8	0.8	0.8	0.7	0.7	0.7	0.5	0.5	0.5	0
Walls	0.7	0.5	0.3	0.7	0.5	0.3	0.7	0.5	0.3	0
Working plane	0.2	0.2	0.2	0.2	0.2	0.2	0.2	0.2	0.2	0
ROOM INDEX	UTILIZATION FACTORS (PERCENT) $k(RI) \times RCR = 5$									
k = 0.60	36	23	15	34	22	15	31	20	14	7
0.80	44	30	21	42	28	20	37	26	19	9
1.00	51	36	27	48	35	26	43	33	24	13
1.25	58	43	33	54	41	32	48	37	29	16
1.50	63	49	39	59	46	37	51	41	33	19
2.00	71	58	48	66	54	45	57	48	40	23
2.50	76	64	54	71	60	51	61	52	45	26
3.00	81	69	60	75	65	56	64	56	49	29
4.00	86	76	68	80	71	63	68	61	55	33
5.00	90	81	73	83	75	69	71	65	60	36
ROOM INDEX	UF(total)									Direct
According to DIN EN 13032-2 2004			Suspended				SHRNOM = 1.25			

C Range: 0 - 360DEG
 C Interval: 22.5DEG
 Test Speed: HIGH
 Temperature:24.9DEG
 Operators:Link Chai
 Test Date:2022-07-19

Range: 0 - 180DEG
 Interval: 1.0DEG
 Test System:EVERFINE GO-R5000_V2 SYSTEM V2.0.366
 Humidity:60%
 Test Distance:26.000m [K=1.4046]
 Remarks:

ISOCANDELA DIAGRAM

Test:U:12.036V I:0.1821A P:1.4725W PF:0.6720 Freq:50.01Hz Lamp Flux:173.36x1 lm		
NAME:	TYPE:LED	WEIGHT:N/A
SPEC.:N/A	DIM.: N/A	SERIAL No.:
MFR.:	SUR.:	Shielding Angle:

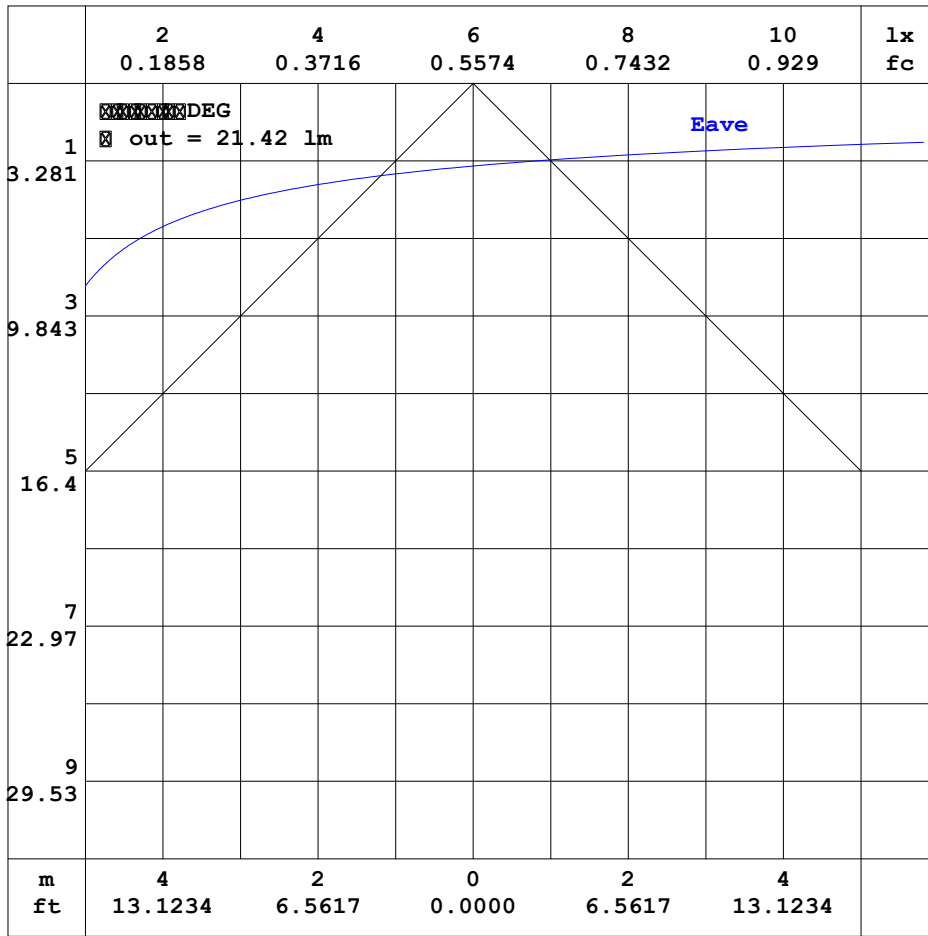


C Range: 0 - 360DEG
 C Interval: 22.5DEG
 Test Speed: HIGH
 Temperature:24.9DEG
 Operators:Link Chai
 Test Date:2022-07-19

Range: 0 - 180DEG
 Interval: 1.0DEG
 Test System:EVERFINE GO-R5000_V2 SYSTEM V2.0.366
 Humidity:60%
 Test Distance:26.000m [K=1.4046]
 Remarks:

AAI CURVES

Test:U:12.036V I:0.1821A P:1.4725W PF:0.6720 Freq:50.01Hz Lamp Flux:173.36x1 lm		
NAME :	TYPE:LED	WEIGHT:N/A
SPEC.:N/A	DIM.: N/A	SERIAL No.:
MFR.:	SUR.:	Shielding Angle:



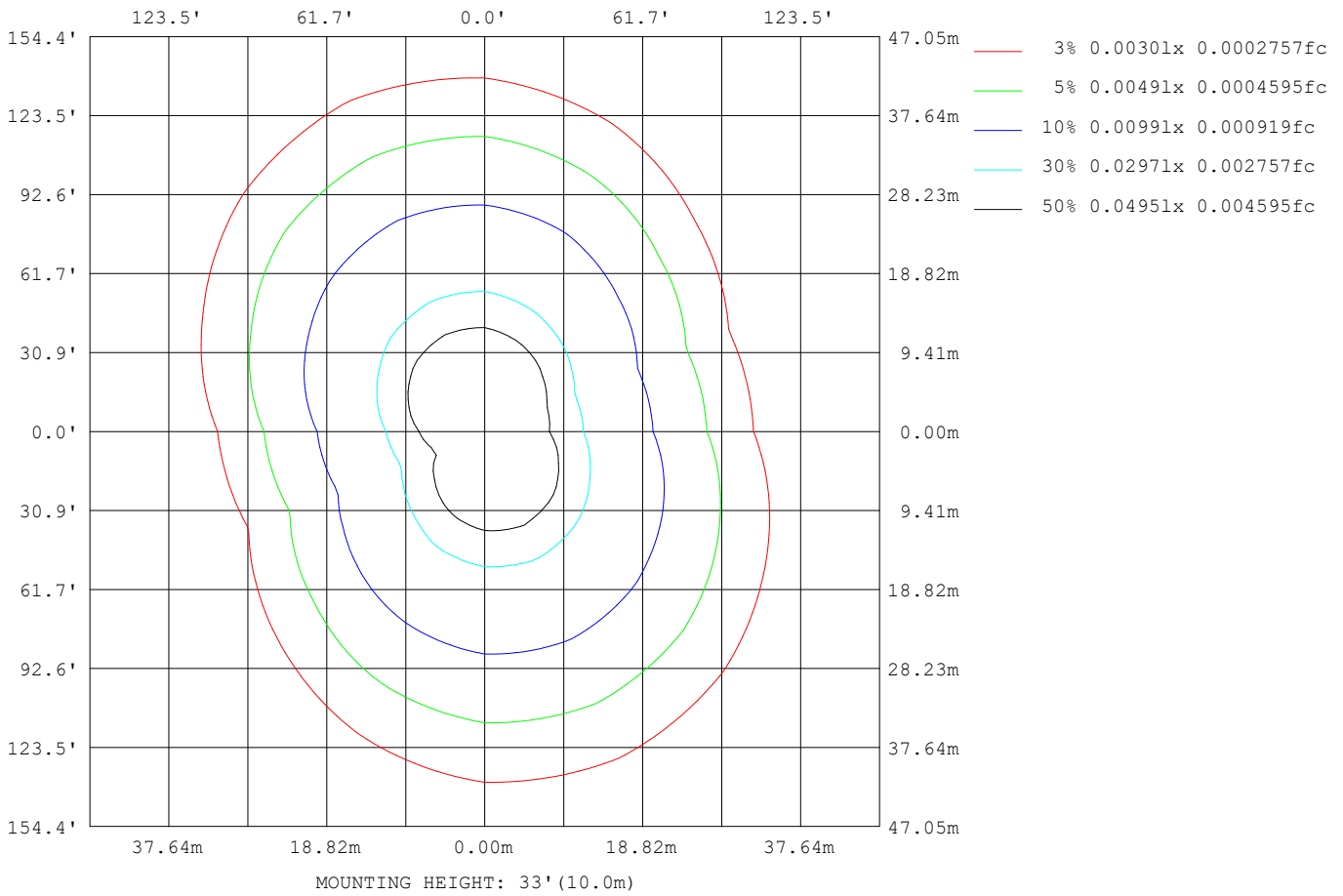
Note: The Curves indicate the illuminated area and the average illumination when the luminaire is at different distance.

C Range: 0 - 360DEG
 C Interval: 22.5DEG
 Test Speed: HIGH
 Temperature: 24.9DEG
 Operators: Link Chai
 Test Date: 2022-07-19

Range: 0 - 180DEG
 Interval: 1.0DEG
 Test System: EVERFINE GO-R5000_V2 SYSTEM V2.0.366
 Humidity: 60%
 Test Distance: 26.000m [K=1.4046]
 Remarks:

ISOLUX DIAGRAM

Test:U:12.036V I:0.1821A P:1.4725W PF:0.6720 Freq:50.01Hz Lamp Flux:173.36x1 lm		
NAME:	TYPE:LED	WEIGHT:N/A
SPEC.:N/A	DIM.: N/A	SERIAL No.:
MFR.:	SUR.:	Shielding Angle:



C Range: 0 - 360DEG
 C Interval: 22.5DEG
 Test Speed: HIGH
 Temperature:24.9DEG
 Operators:Link Chai
 Test Date:2022-07-19

Range: 0 - 180DEG
 Interval: 1.0DEG
 Test System:EVERFINE GO-R5000_V2 SYSTEM V2.0.366
 Humidity:60%
 Test Distance:26.000m [K=1.4046]
 Remarks:

LED Avg.L Report

Test:U:12.036V I:0.1821A P:1.4725W PF:0.6720 Freq:50.01Hz Lamp Flux:173.36x1 lm		
NAME:	TYPE:LED	WEIGHT:N/A
SPEC.:N/A	DIM.: N/A	SERIAL No.:
MFR.:	SUR.:	Shielding Angle:

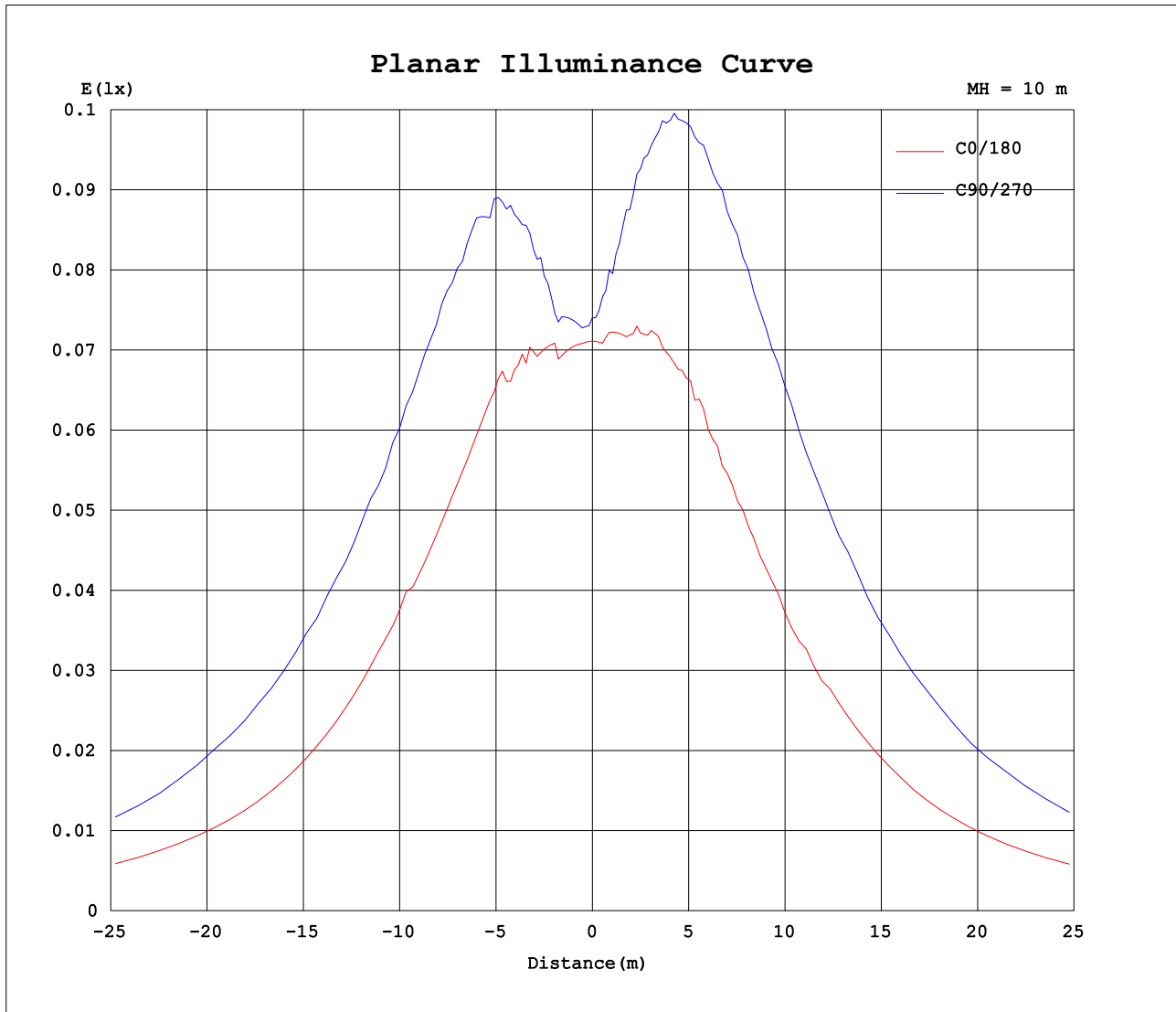
AvgL	cd/m2
L_0~180 (65) av	263
L_0~180 (75) av	431
L_0~180 (85) av	1267
L_90~270 (65) av	531
L_90~270 (75) av	913
L_90~270 (85) av	2759
L_45 (65) av	409
L_45 (75) av	687
L_45 (85) av	2068

Standard: GB/T 29293-2012

C Range: 0 - 360DEG
 C Interval: 22.5DEG
 Test Speed: HIGH
 Temperature:24.9DEG
 Operators:Link Chai
 Test Date:2022-07-19

Range: 0 - 180DEG
 Interval: 1.0DEG
 Test System:EVERFINE GO-R5000_V2 SYSTEM V2.0.366
 Humidity:60%
 Test Distance:26.000m [K=1.4046]
 Remarks:

Planar Illuminance Curve



C Range: 0 - 360DEG
C Interval: 22.5DEG
Test Speed: HIGH
Temperature: 24.9DEG
Operators: Link Chai
Test Date: 2022-07-19

Range: 0 - 180DEG
 Interval: 1.0DEG
Test System: EVERFINE GO-R5000_V2 SYSTEM V2.0.366
Humidity: 60%
Test Distance: 26.000m [K=1.4046]
Remarks:

LUMINOUS DISTRIBUTION INTENSITY DATA

Test:U:12.036V I:0.1821A P:1.4725W PF:0.6720 Freq:50.01Hz Lamp Flux:173.36x1 lm		
NAME:	TYPE:LED	WEIGHT:N/A
SPEC.:N/A	DIM.: N/A	SERIAL No.:
MFR.:	SUR.:	Shielding Angle:

Table--1

UNIT: cd

C (DEG) ☒ (DEG)	0	22.5	45	67.5	90	112.5	135	157.5	180	202.5	225	247.5	270	292.5	315	337.5			
0	7.11	7.21	7.31	7.41	7.40	7.40	7.40	7.21	7.11	7.21	7.31	7.41	7.40	7.40	7.40	7.21			
5	7.14	7.21	7.21	7.31	7.44	7.24	7.19	7.13	7.30	7.50	7.60	7.80	8.09	7.99	7.80	7.70			
10	7.21	7.79	7.79	7.89	7.70	7.31	7.40	7.18	7.50	8.09	8.58	8.97	9.16	8.87	8.38	8.09			
15	7.73	8.49	9.05	9.16	9.05	8.37	7.60	7.23	7.99	8.77	9.74	10.5	10.4	10.0	9.26	8.67			
20	8.38	9.44	10.1	10.8	10.3	9.45	8.09	7.28	8.48	9.74	11.0	11.8	11.9	11.1	10.1	8.96			
25	9.05	10.0	11.4	12.2	11.9	10.7	8.96	7.69	9.06	10.6	12.2	13.3	13.3	12.3	10.6	9.55			
30	9.37	10.9	12.8	13.8	13.3	11.7	9.70	7.77	9.64	11.4	13.5	14.4	14.7	13.4	11.4	9.94			
35	9.70	11.9	13.8	15.2	14.6	12.8	10.3	8.28	9.94	12.4	14.9	16.1	15.9	14.4	12.1	10.2			
40	10.1	12.6	15.2	16.4	15.9	13.8	11.0	8.67	10.3	13.1	15.9	17.3	17.2	15.6	12.7	10.4			
45	10.6	13.2	16.2	17.8	17.0	14.8	11.7	9.25	10.5	13.7	17.0	18.6	18.5	16.6	13.4	10.6			
50	10.8	14.0	17.0	19.0	18.4	15.7	12.1	9.45	10.8	14.4	17.9	19.7	19.7	17.3	13.9	10.6			
55	10.9	14.5	18.2	20.3	19.4	16.9	12.6	9.45	11.2	14.9	18.9	21.1	20.8	18.2	14.4	10.7			
60	11.0	15.3	19.1	21.7	20.7	17.4	13.0	9.68	11.1	15.4	19.8	22.3	22.1	19.4	14.7	10.7			
65	11.2	15.5	20.2	22.6	21.8	18.3	13.7	9.74	11.1	15.9	20.6	23.1	23.1	19.8	14.7	10.7			
70	11.2	16.0	20.7	23.2	22.6	18.8	13.9	9.74	11.1	15.9	21.1	24.1	23.6	20.2	14.7	10.7			
75	11.2	16.1	21.0	24.0	23.2	19.4	14.2	9.74	11.1	15.9	21.2	24.6	24.1	20.3	14.6	10.4			
80	11.2	16.1	21.6	24.4	23.6	20.0	14.2	9.74	10.9	15.9	21.3	24.7	24.1	20.3	14.6	10.3			
85	11.2	16.1	21.9	24.6	24.0	20.3	14.2	9.74	10.9	16.0	21.3	24.8	24.1	20.4	14.7	10.1			
90	11.2	16.1	21.8	25.0	23.9	20.3	14.2	9.74	10.9	15.9	21.2	24.5	24.2	20.4	14.6	10.0			
95	11.2	16.1	21.7	24.7	23.9	20.3	14.1	9.74	10.8	15.7	20.8	24.1	23.7	19.9	14.2	9.65			
100	11.2	16.1	21.2	24.5	23.8	20.0	14.1	9.74	10.8	15.7	20.7	23.7	23.0	19.3	14.0	9.40			
105	11.0	15.6	20.4	23.5	23.1	19.6	14.1	9.74	10.3	15.3	20.0	22.9	22.5	18.7	13.3	9.35			
110	10.5	14.7	19.3	22.6	22.0	18.6	13.7	9.74	10.0	14.3	19.0	21.8	21.1	17.7	12.6	8.48			
115	9.94	13.9	18.4	21.1	20.9	17.6	13.3	9.45	9.45	13.8	17.9	20.5	20.1	16.5	12.0	7.79			
120	9.07	13.0	17.2	19.7	19.7	16.6	12.6	9.02	9.13	12.9	17.0	19.1	18.6	15.4	10.9	7.50			
125	8.48	11.9	15.7	18.0	17.8	15.4	11.6	8.38	8.28	11.8	15.6	17.4	17.1	14.1	9.84	6.43			
130	7.60	10.4	14.0	16.3	16.5	13.8	10.5	7.89	7.60	10.9	13.9	15.6	15.0	12.5	8.67	5.93			
135	6.63	2.48	12.4	14.4	14.4	12.5	9.65	7.11	6.91	9.45	12.3	13.8	13.2	10.8	7.60	4.87			
140	5.37	0.83	10.7	12.5	12.6	10.9	8.48	6.24	6.23	8.18	10.5	11.8	11.2	9.25	6.14	3.99			
145	2.76	0.95	8.77	10.4	10.5	9.36	7.21	5.46	4.96	6.81	8.66	9.64	9.16	7.30	4.67	3.11			
150	0.00	1.46	6.34	8.00	8.28	7.31	5.65	4.48	3.80	4.86	6.43	7.58	7.01	5.15	3.12	1.56			
155	0.00	1.46	0.77	4.79	5.37	4.98	4.00	3.32	2.63	2.92	3.97	3.48	0.00	2.52	0.77	0.00			
160	0.00	0.00	0.00	0.00	1.56	2.25	1.87	2.05	1.35	1.35	1.55	0.48	0.29	0.00	0.00	0.00			
165	0.00	0.00	0.00	0.00	0.00	0.00	0.00	0.00	0.00	0.00	0.00	0.00	0.00	0.00	0.00	0.00			
170	0.00	0.00	0.00	0.00	0.00	0.00	0.00	0.00	0.00	0.00	0.00	0.00	0.00	0.00	0.00	0.00			
175	0.00	0.00	0.00	0.00	0.00	0.00	0.00	0.00	0.00	0.00	0.00	0.00	0.00	0.00	0.00	0.00			
180	0.00	0.00	0.00	0.00	0.00	0.00	0.00	0.00	0.00	0.00	0.00	0.00	0.00	0.00	0.00	0.00			

C Range: 0 - 360DEG
 C Interval: 22.5DEG
 Test Speed: HIGH
 Temperature:24.9DEG
 Operators:Link Chai
 Test Date:2022-07-19

☒ Range: 0 - 180DEG
 ☒ Interval: 1.0DEG
 Test System:EVERFINE GO-R5000_V2 SYSTEM V2.0.366
 Humidity:60%
 Test Distance:26.000m [K=1.4046]
 Remarks: