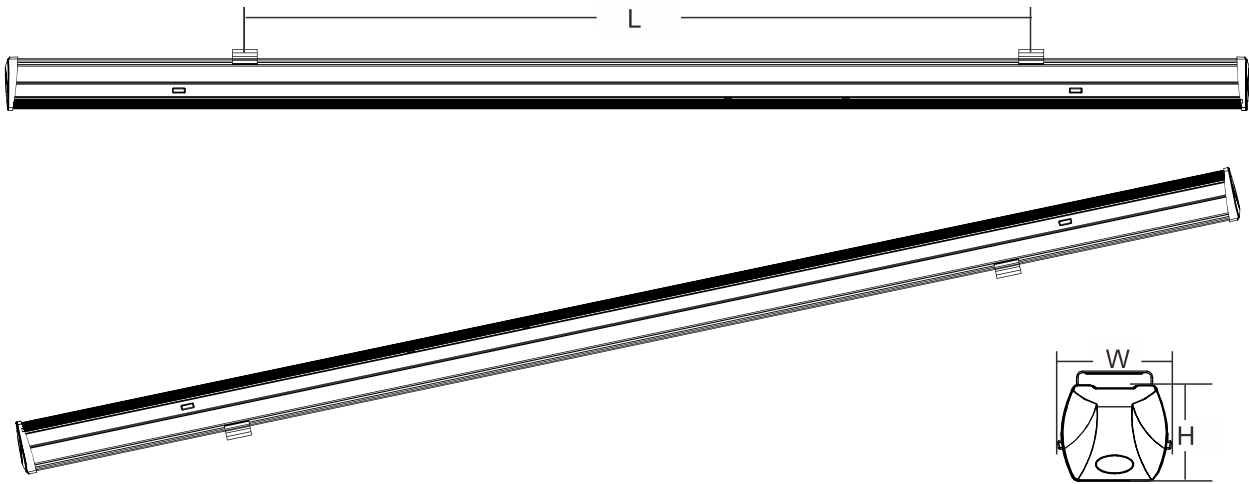


OPTONICA

USER MANUAL FOR LED LINEAR LIGHT

SKU: 16751

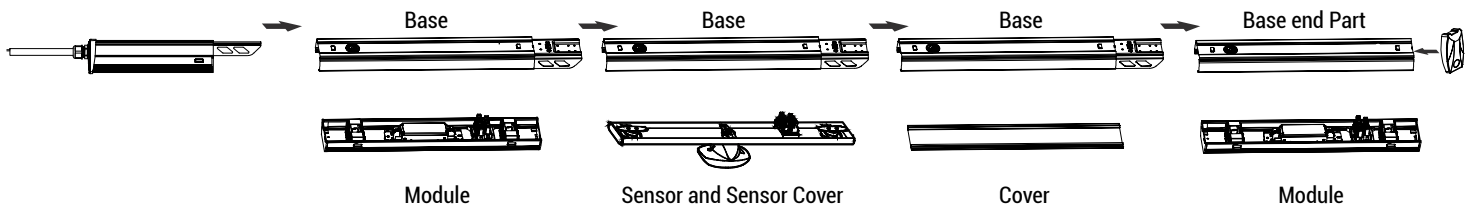


Installation should be performed only by qualified electrician

Make sure no voltage while installation.

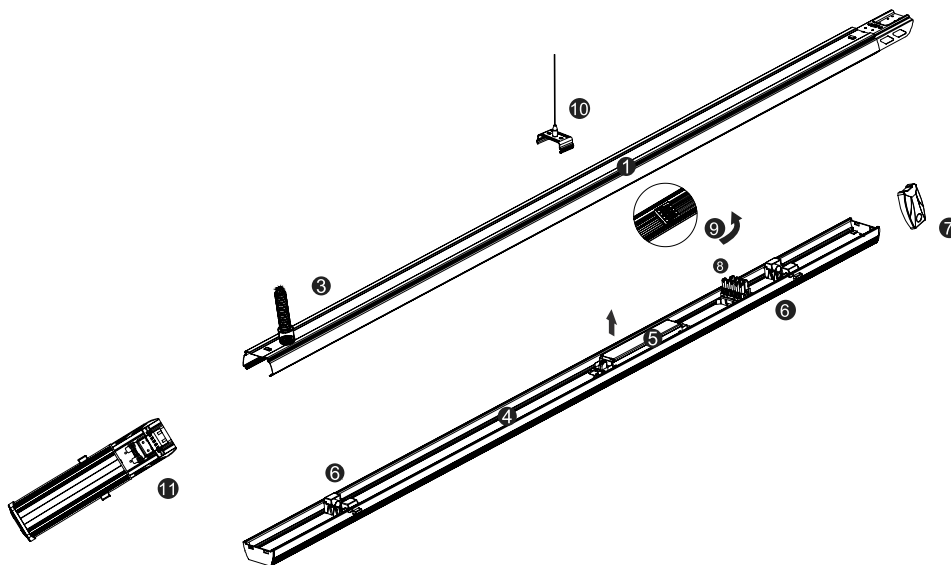
Connect cable wires according to wire labeling.

Max current should not exceed 16A in one power feed in circuit.



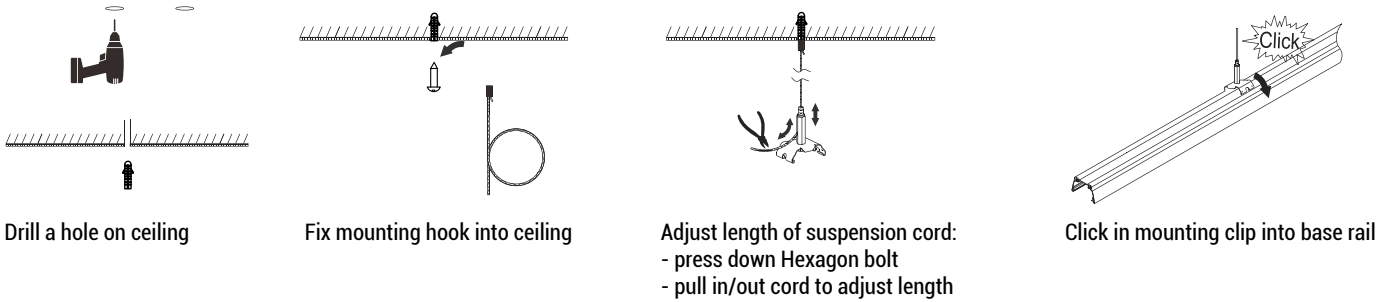
Base and Module:

Always use the Base end Part as last base in the line. Bellow all base components.



- ① Base
- ② Connecting plate
- ③ Power 230V cable
- ④ LED Module
- ⑤ LED Driver
- ⑥ Lock holder
- ⑦ End Cap
- ⑧ Male connector
- ⑨ Female connector
- ⑩ Cord - 3M
- ⑪ Box

Step 1: Mounting Suspension



Step 2: Connecting Power Supply

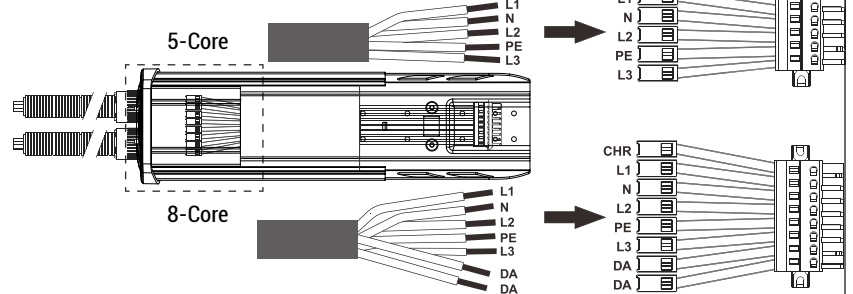
Power connection option 1:

230V CABLE CONNECT WITH FEED IN BOX

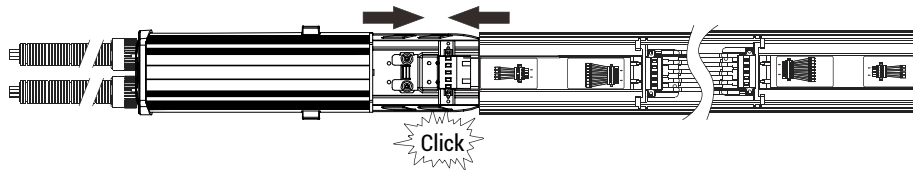
1. Open the cover of Feed in Box.



2. Connect the wires according to the label.



3. Click in Feed in box into base



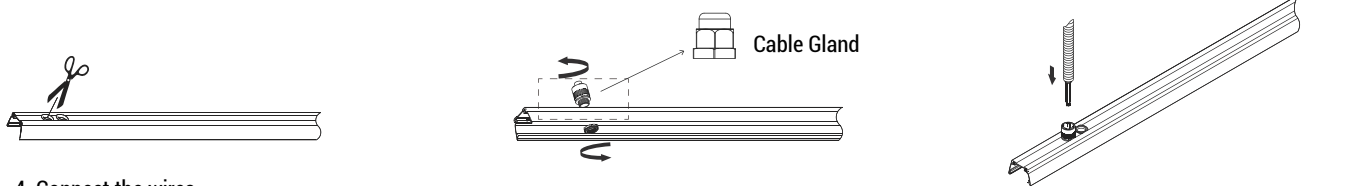
Power connection option 2:

230V CABLE CONNECT FROM BACK OF BASE WITH FEED-IN CONNECTOR.

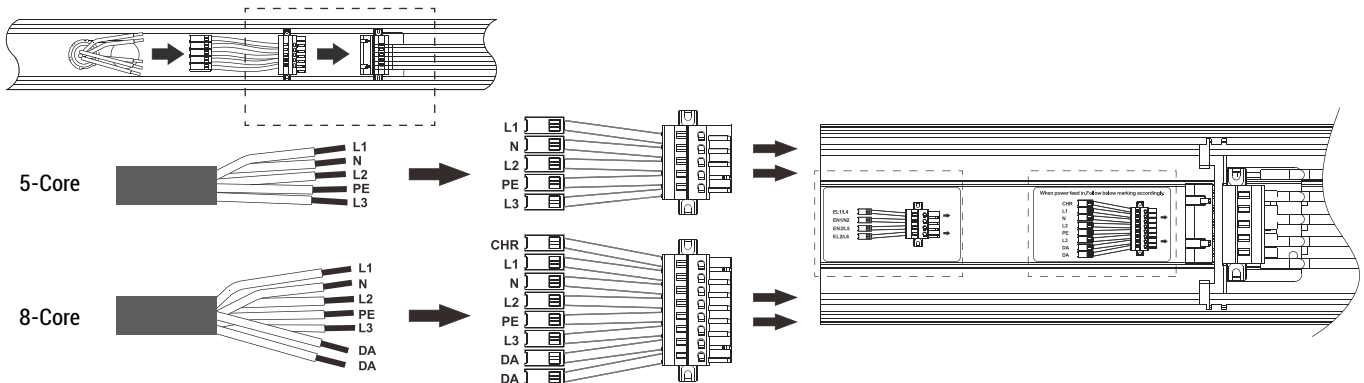
1. 230V Cable connect from back plate of base.

2. Screw in the Cable Gland.

3. Put in cable inside and pull up Cable Gland to lock.



4. Connect the wires.



CHR: Charge input for internal battery, main supply detection for EMG1 or EMG2.

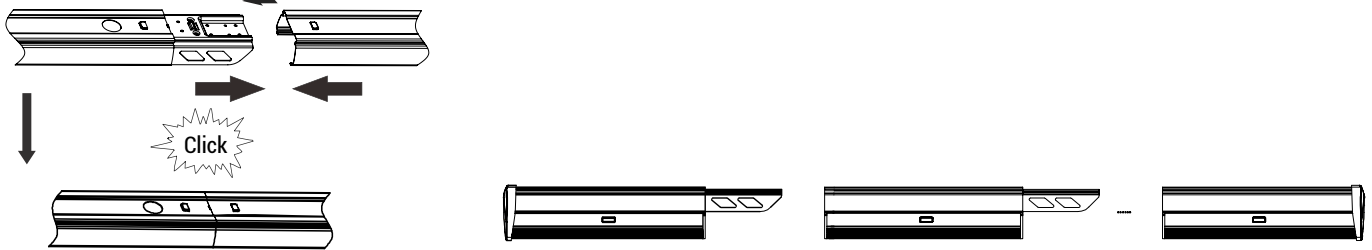
L1: Live wire 1 N: Neutral wire 1
L2: Live wire 2 PE: Ground
L3: Live wire 3 DA: DALI input

Note: Only L1/L2/L3/N1/PE wires are 2.5mm² with 16A, the rest are 1.5mm² with 10A.

Model	Wire Qty	Function Description	Wire Description							
			1	2	3	4	5	6	7	8
1	5-Core	Standard and DALI	L1	N	L2	PE	L3	\	\	\
2	8-Core	Standard and DALI	CHR	L1	N	L2	PE	L3	DA	DA

Step 3: Connecting of the base

All basics should keep in perfect position then push to click.



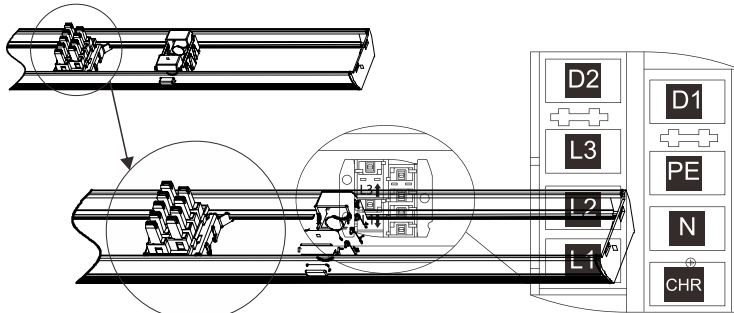
Total quantity

Module	Base	Electric Current	Max. Quantity by Cascade Connection	Total Length by Cascade Connection
50W	1.5m	16A	100pcs	150m

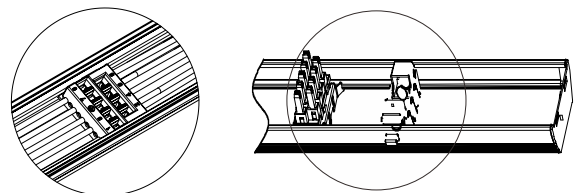
Max current should not exceed 16A in one power feed in circuit (Total L1+L2+L3).

Step 4: Mounting Module

1. Select phase L1/L2/L3 on Module via Label. (Factory setting is L1)



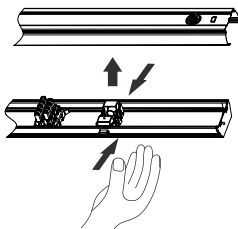
2. Make sure male & female connectors in right position.



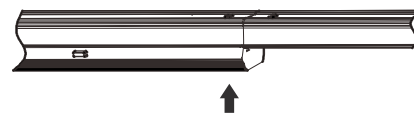
Female connector on Base

Male connector on Module

3. Press the lock by both sides and mount the Module.



4. The Module fixed in the Base.

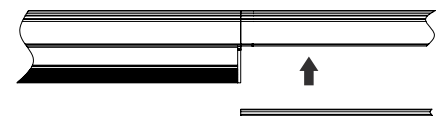
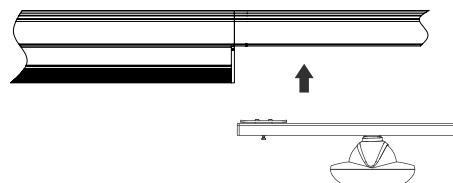
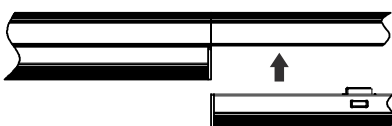


Step 4:

1. Mount the other Module.

2. Mount the Sensor with Sensor cover.

3. Mount the Cover.



Step 6 (End):

Step 6.1 (the last one-Module)

1. Mount Screws on the both sides to lock the Modules.
2. Mount the End Cap.

Step 6.1 (the last one-Module)



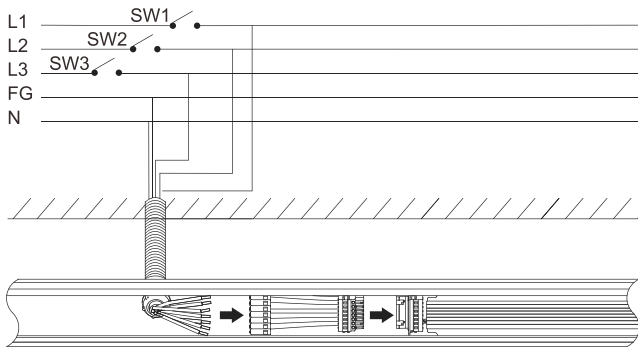
LED Base Cover End Cap



LED Base Cover End Cap



Wire diagram of triple circuits function



This Triple Circuits function offers to control lighting ON/OFF by three switches SW1, SW2, SW3 which are connected by live lines L1, L2, L3

Pendent mounting installation

Starting Installation distances point should be 800mm to 1000mm then in between 1st & 2nd point should be 3000mm max.

