



EU Type Examination Certificate Number: 0120/SGS0206

Zhejiang Eastron Electronic Co.,Ltd.

No. 1369, Chengnan Road,
Jiaying,
Zhejiang,
China,
314001.

Instrument Identification:
SDM230 Series

Instrument Traceable Number
0120/SGS0206

Single Phase, Active Import/ Export (kWh), Indoor, Electricity Meter

has been assessed and certified as meeting the requirements of

EU Directive 2014/32/EU
on Measuring Instruments Annex II, Module B

It is certified that the manufacturer's technical design and specimen for the above instrument has been examined and, based on the evidence submitted, it is considered that the instrument conforms to the requirements of Annex V of EU Directive 2014/32/EU

This certificate must be used in conjunction with a certificate covering the product verification as required in Annex II, Module D or Annex II, Module F

This certificate is valid for 10 years from 30th September 2015 to 29th September 2025
Issue 6

Certification is based on report number(s) SHES141200649301 issued 16th April 2015
EMA207767 issued 9th October 2015
EMA281302/1

Authorised Signature

SGS Fimko OY, Notified Body 0598
Takomotie 8, FI-00380 Helsinki, Finland
t +358 9 696 f +358 692 574 www.sgs.com




EU-Type Examination Certificate Number:

0120/SGS0206

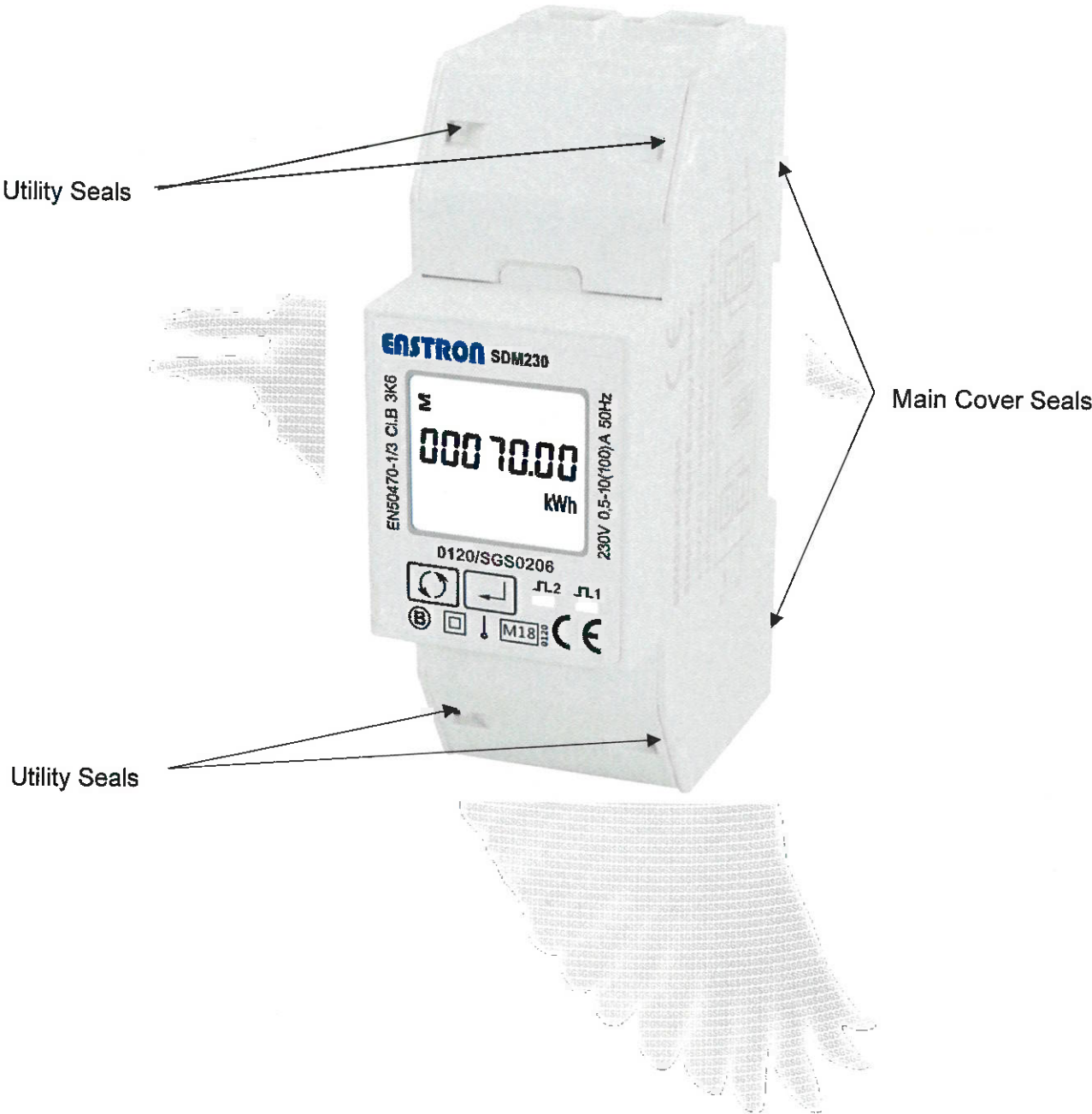
Issue Number: 6

Dated: 25th February 2021**1. Technical Data**

Manufacturer	Zhejiang Eastron Electronic Co.,Ltd
Meter Type(s)	SDM230-Modbus, SDM230-Bi, SDM230-DR, SDM230-Pulse, SDM230-Mbus V1, SDM230-Mbus V2, SDM230-2T, SDM230M-DI, SDM230-LoRa, SDM230-WIFI
Voltage Rating (U_n)	230V
Current Rating ($I_{min} - I_{ref} (I_{max})$)	0.5-10(100)A
Frequency (F_n)	50Hz
Active Accuracy Class (kWh)	A or B (kWh)
Type of circuit	1p2w
Temperature Range	-25°C to +55°C
Software Version No's	SDM230-Modbus, SDM230-Bi, SDM230-DR, SDM230-Pulse:V1.2 SDM230-2T: V1.3 SDM230-Mbus V1, SDM230-Mbus V2: V1.2 SDM230M-DI: V1.1 SDM230-LoRa: V2.3 SDM230-WIFI: V4.4
Checksum No's	SDM230-Modbus, SDM230-Bi, SDM230-DR, SDM230-Pulse: 0x000052F2 SDM230-2T: 0x00001AD5 SDM230-Mbus V1, SDM230-Mbus V2: 0x00004D23 SDM230M-DI: 0X2547 SDM230-LoRa: 0XB1F2 SDM230-WIFI: 0XD712
Identification Location	Nameplate
Bill Of Materials No.'s	SDM230-Modbus, SDM230 Bi, SDM230 DR, SDM230 Pulse: 20150929 SDM230-2T: DH-JS-180009-1.0 SDM230-Mbus: DH-JS-180017-V1.0 SDM230-Mbus V2: DH-JS-180029-V1.0 SDM230M-DI: DH-JS-200012 SDM230-LoRa: DH-JS200010 SDM230-WIFI: DH-JS-190042
IP Rating	IP51
Insulation Protective Class	Class II
LED Pulse Constant	1000imp/ kWh
Impulse Voltage Rating	6kV
AC Voltage Rating	4kV
Terminal Cover Sealing Type	4 x Wire & Crimp
Integrity of meter	Inaccessible without breaking seals
Intended Location of the Meter	Indoor
Type of Register	LCD

	EU-Type Examination Certificate Number:	
	0120/SGS0206	
	Issue Number: 6	Dated: 25 th February 2021

2. Photograph of Meter and Sealing Plan



SGS

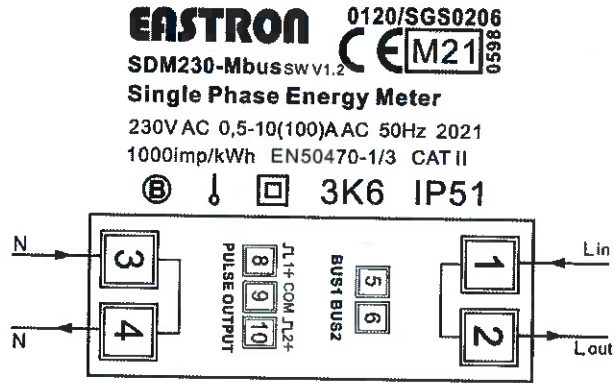
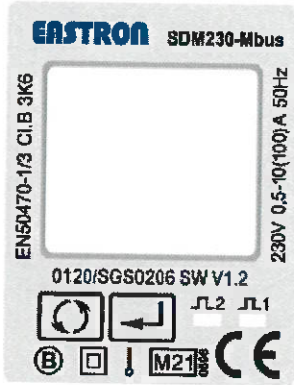
EU-Type Examination Certificate Number:

0120/SGS0206

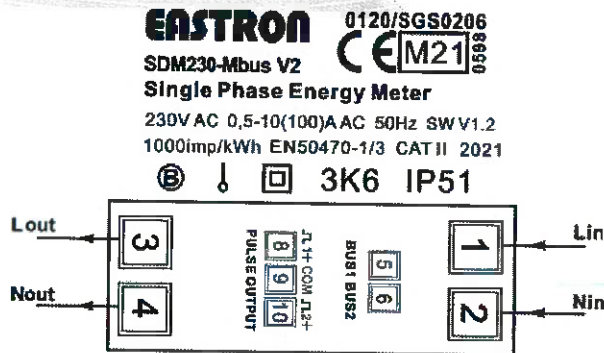
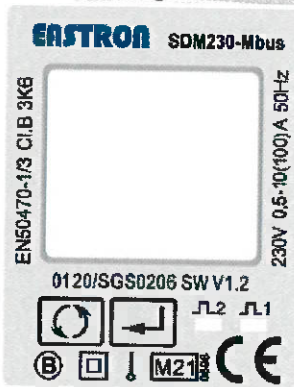
Issue Number: 6

Dated: 25th February 2021

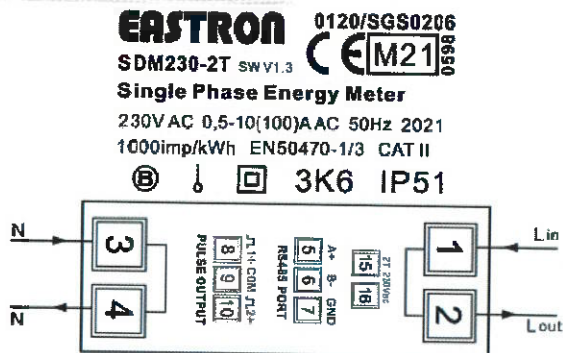
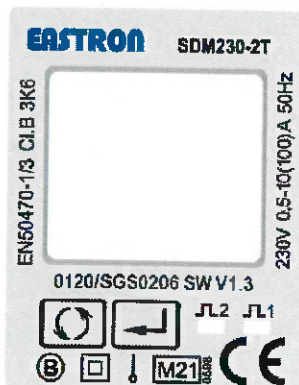
3. Examples of Nameplates



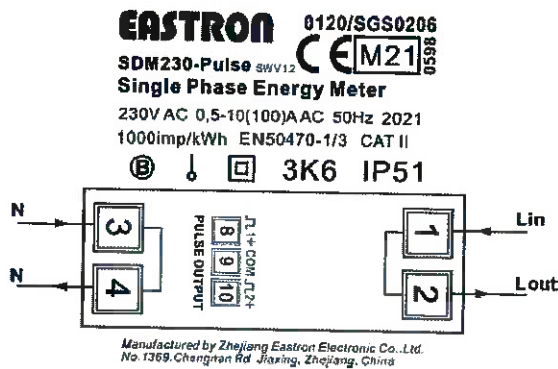
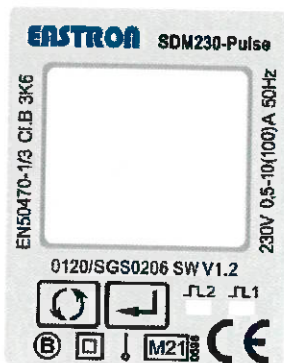
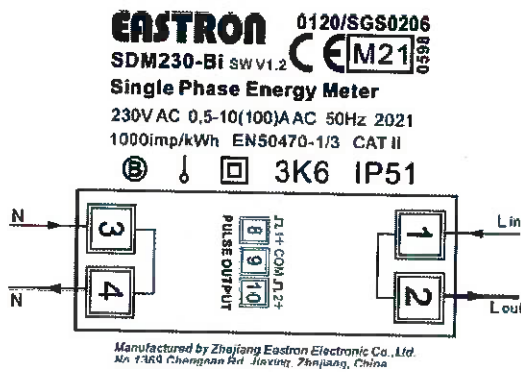
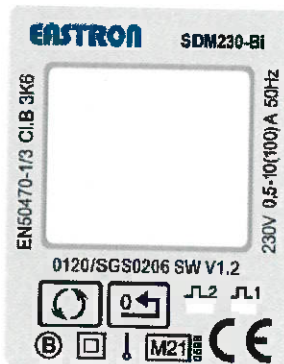
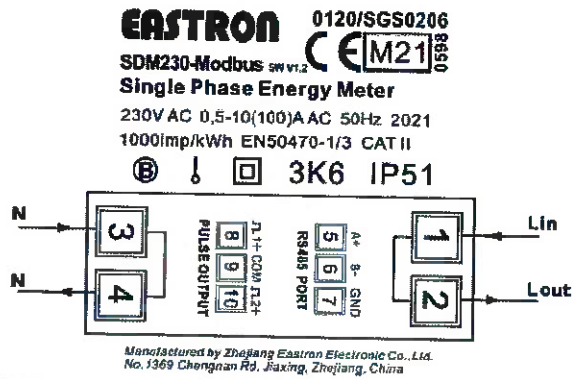
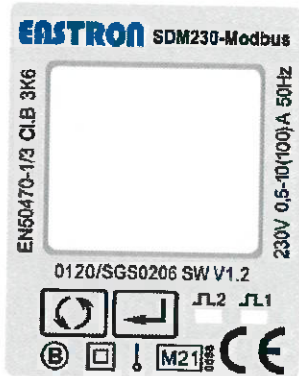
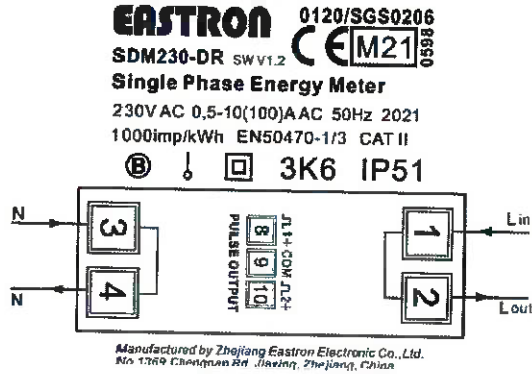
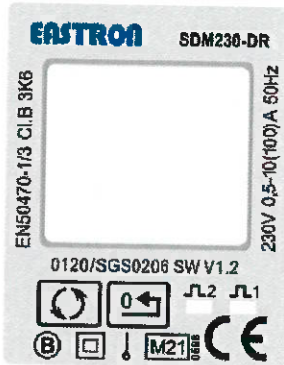
Manufactured by Zhejiang Eastron Electronic Co., Ltd.
No. 1369, Chengnan Rd. Jiaxing, Zhejiang, China



Manufactured by Zhejiang Eastron Electronic Co., Ltd.
No. 1369, Chengnan Rd. Jiaxing, Zhejiang, China



Manufactured by Zhejiang Eastron Electronic Co., Ltd.
No. 1369, Chengnan Rd. Jiaxing, Zhejiang, China



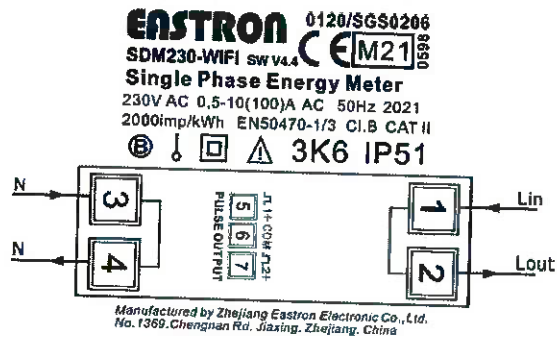
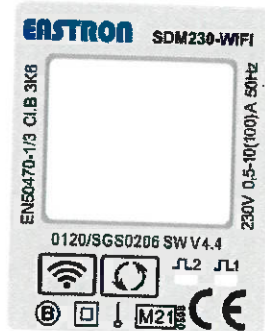
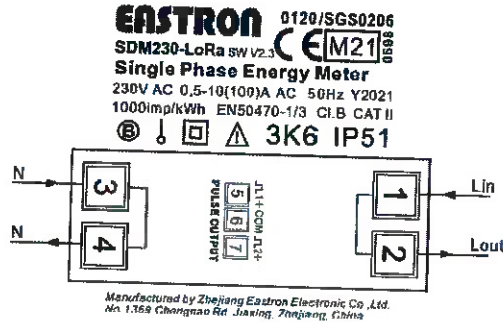
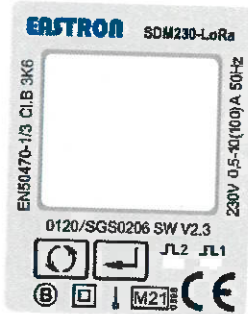
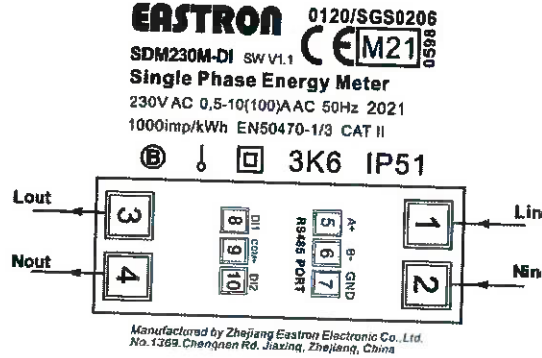
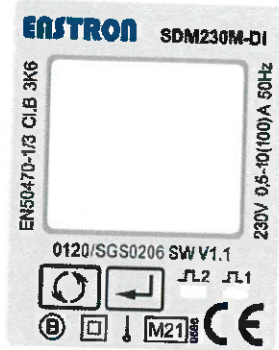
SGS

EU-Type Examination Certificate Number:

0120/SGS0206

Issue Number: 6

Dated: 25th February 2021



4. Calculation of the composite error/ MPE

During the type approval examination the influence factors for temperature, frequency and voltage are determined per load point. The table below represents the sum of the square values per load, determined via the following formula:-

$$\delta e(T, U, f) = \sqrt{(\delta e^2(T, I, \cos\phi) + \delta e^2(U, I, \cos\phi) + \delta e^2(f, I, \cos\phi))}$$

where

- $\delta e(T, I, \cos\phi)$ = Additional error due to variation of the temperature at the same load
- $\delta e(U, I, \cos\phi)$ = Additional error due to variation of the voltage at the same load
- $\delta e(f, I, \cos\phi)$ = Additional error due to variation of the frequency at the same load

		Influence Factors for Temperature, Voltage & Frequency					
Current	PF Cos	-25°C	-10°C	5°C	30°C	40°C	55°C
I _{min}	1.0	0.45	0.33	0.23	0.15	0.17	0.23
I _{tr}	1.0	0.44	0.31	0.19	0.07	0.10	0.18
10I _{tr}	1.0	0.42	0.29	0.18	0.03	0.08	0.16
I _{max}	1.0	0.27	0.19	0.12	0.03	0.06	0.12
I _{tr}	0.5ind	0.48	0.36	0.27	0.17	0.18	0.22
10I _{tr}	0.5ind	0.41	0.28	0.17	0.03	0.08	0.17
I _{max}	0.5ind	0.27	0.18	0.12	0.04	0.07	0.13
I _{tr}	0.8cap	0.45	0.31	0.20	0.09	0.12	0.18
10I _{tr}	0.8cap	0.40	0.27	0.16	0.04	0.10	0.19
I _{max}	0.8cap	0.26	0.19	0.11	0.05	0.08	0.15



EU-Type Examination Certificate Number:

0120/SGS0206

Issue Number: 6


Dated: 25th February 2021

5. Annex of Variants

Product Variant Identification Details:

Type Designation	Description of meter
SDM230-Modbus:	Single tariff, total active energy, resettable active energy, import active energy, export active energy, total reactive energy, import reactive energy, export reactive energy, active power, reactive power, voltage, current, frequency, power factor, power demand, RS485 Modbus communication.
SDM230-Mbus	Single tariff, total active energy, resettable active energy, import active energy, export active energy, total reactive energy, import reactive energy, export reactive energy, active power, reactive power, voltage, current, frequency, power factor, power demand, Mbus communication
SDM230-Pulse:	Single tariff, total active energy, resettable active energy, import active energy, export active energy, total reactive energy, import reactive energy, export reactive energy, active power, reactive power, voltage, current, frequency, power factor, power demand.
SDM230-DR:	Single tariff, total active energy, resettable energy, active power
SDM230-Bi:	Single tariff, import active energy, export active energy, import active power, export active power, total active energy, total active power
SDM230-2T:	Two tariff, total active energy, resettable active energy, import active energy, export active energy, total reactive energy, import reactive energy, export reactive energy, active power, reactive power, voltage, current, frequency, power factor, power demand, RS485 Modbus communication
SDM230M-DI	Single tariff, total active energy, resettable active energy, import active energy, export active energy, total reactive energy, import reactive energy, export reactive energy, active power, reactive power, voltage, current, frequency, power factor, power demand RS485 Modbus communication, digital inputs.
SDM230-LoRa	Single tariff, total active energy, resettable active energy, import active energy, export active energy, total reactive energy, import reactive energy, export reactive energy, active power, reactive power, voltage, current, frequency, power factor, power demand with built in LoRaWAN Communications
SDM230-WIFI	Single tariff, total active energy, resettable active energy, import active energy, export active energy, total reactive energy, import reactive energy, export reactive energy, active power, reactive power, voltage, current, frequency, power factor, power demand with built in WIFI Communications

Modifications to the meter(s) described according to approval No. **0120/SGS0206** must be notified to the issuing body to confirm the meter(s) continuing compliance to the relevant pattern approval standard(s).

	EU-Type Examination Certificate Number:	
	0120/SGS0206	
	Issue Number: 6	Dated: 25 th February 2021

6. Document Revision History

Issue	Date	Comments
1	09/10/2015	Initial Issue
2	23/11/2015	Meter types SDM230-Pulse, SDM230-DR and SDM230-Bi added to approval
3	06/06/2018	Meter type SDM230-2T and SDM230-Mbus added to approval
4	29/11/2018	Meter type SDM230-Mbus V2 added to approval
5	09/09/2020	Meter type SDM230M-DI & SDM230-LoRa added to approval
6	25/02/2021	Meter type SDM230-WiFi added to approval and change of Notified Body reference

This document is issued by the Company subject to its General Conditions for Certification Services, available on request or accessible at <http://www.sgs.com/en/Terms-and-Conditions.aspx>.

Attention is drawn to the limitation of liability, indemnification and jurisdiction issues defined therein. Any holder of this document is advised that information contained hereon reflects the Company's findings at the time of its intervention only and within the limits of Client's instructions, if any. The Company's sole responsibility is to its Client and this document does not exonerate parties to a transaction from exercising all their rights and obligations under the transaction documents. This document cannot be reproduced except in full, without prior written approval of the Company. Any unauthorized alteration, forgery or falsification of the content or appearance of this document is unlawful and offenders may be prosecuted to the fullest extent of the law.

Unless otherwise stated the results shown in this test report refer only to the sample(s) tested *and such sample(s) are retained for 28 days only*.

END OF CERTIFICATE