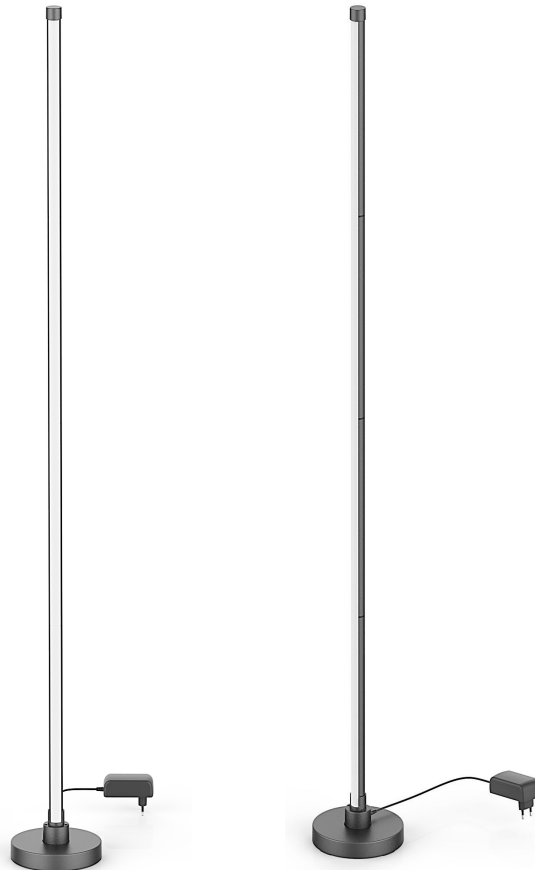


# OPTONICA

---

## USER MANUAL

### Floor lamp



#### Features

- DIY modular assembly
- Remote control
- Multiple color changes
- Multiple mode changes
- High efficiency, energy saving and environmental protection
- Easy to install and versatile

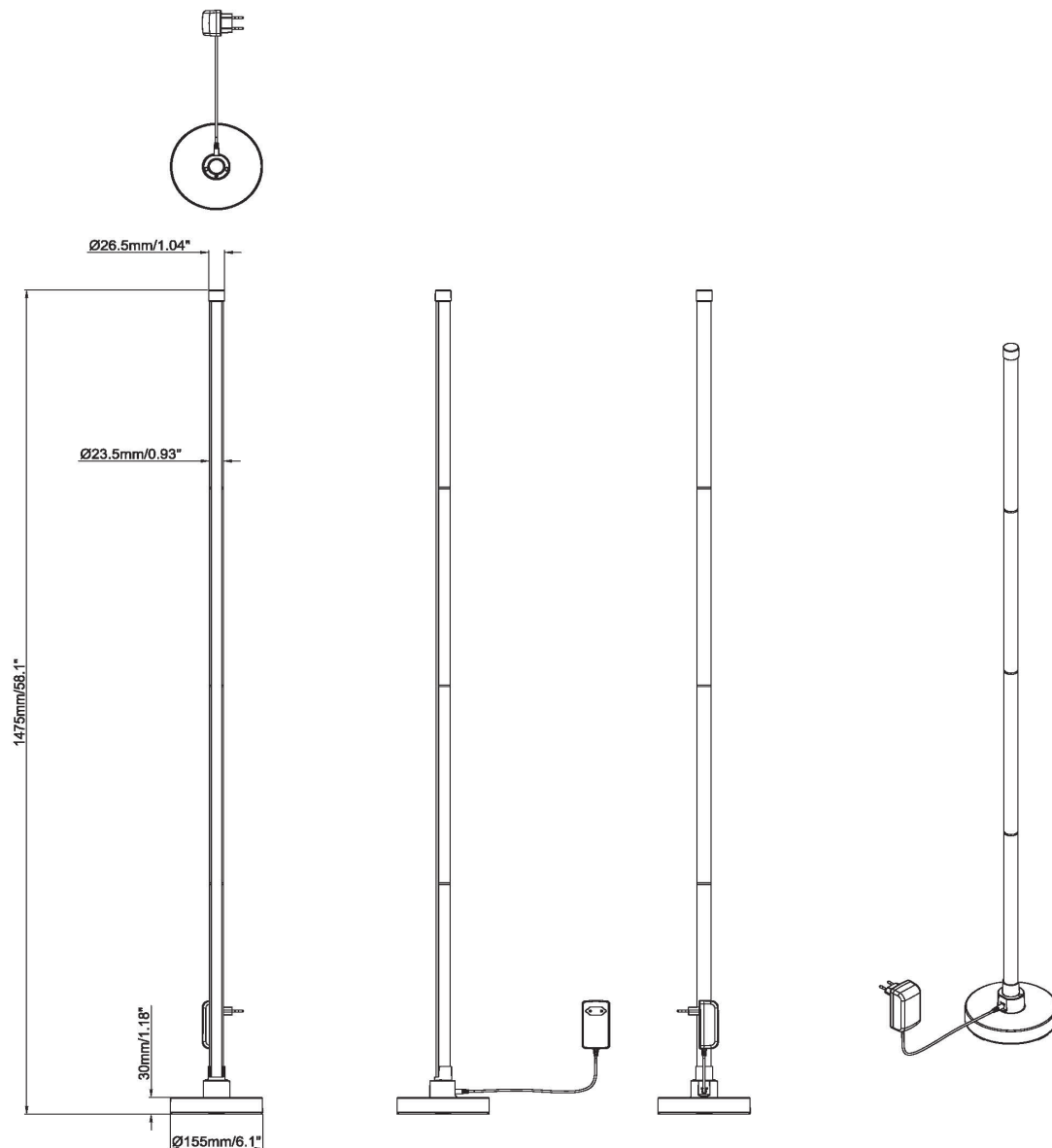
#### Instructions for use

- Refer to the instruction manual to assemble the floor - standing atmosphere lamp kit into a finished lamp, and then power on test;
- The remote control can control a variety of RGB color static changes;
- The white light mode can be independently controlled by there mote control and the brightness can be adjusted;
- The dynamic color change of the ambient light can be adjusted;

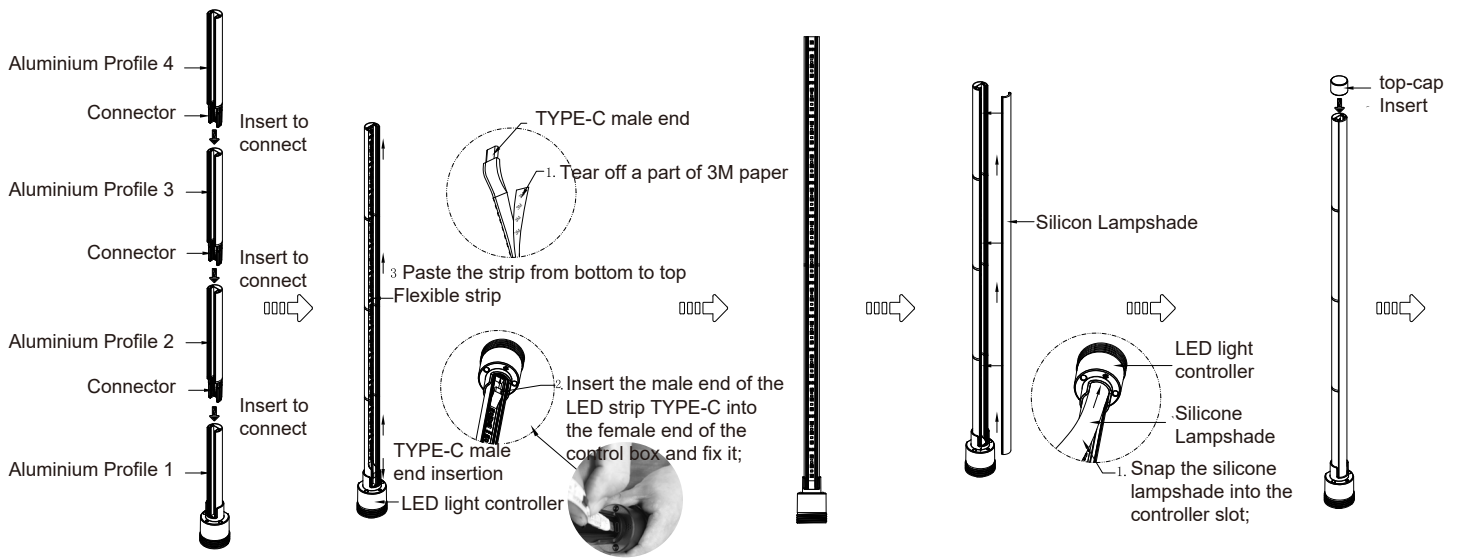
## Technical Parameters

SKU	238
Product Size	23.5*1462mm
Rated Power	17W
Working Voltage	DC 12V 1.5A
Led Style	5050 RGB
LED Quantity	5050 RGB
Color Temperature	RGB+3000K
Color Rendering Index	>80Ra
Lumen	400lm
Shell Body Material	Aluminum+ABS+Silicon
Storage Environment	-20°C+40 °C
Work Environment	-20°C+40°C

## Product size chart



# Installation Instruction

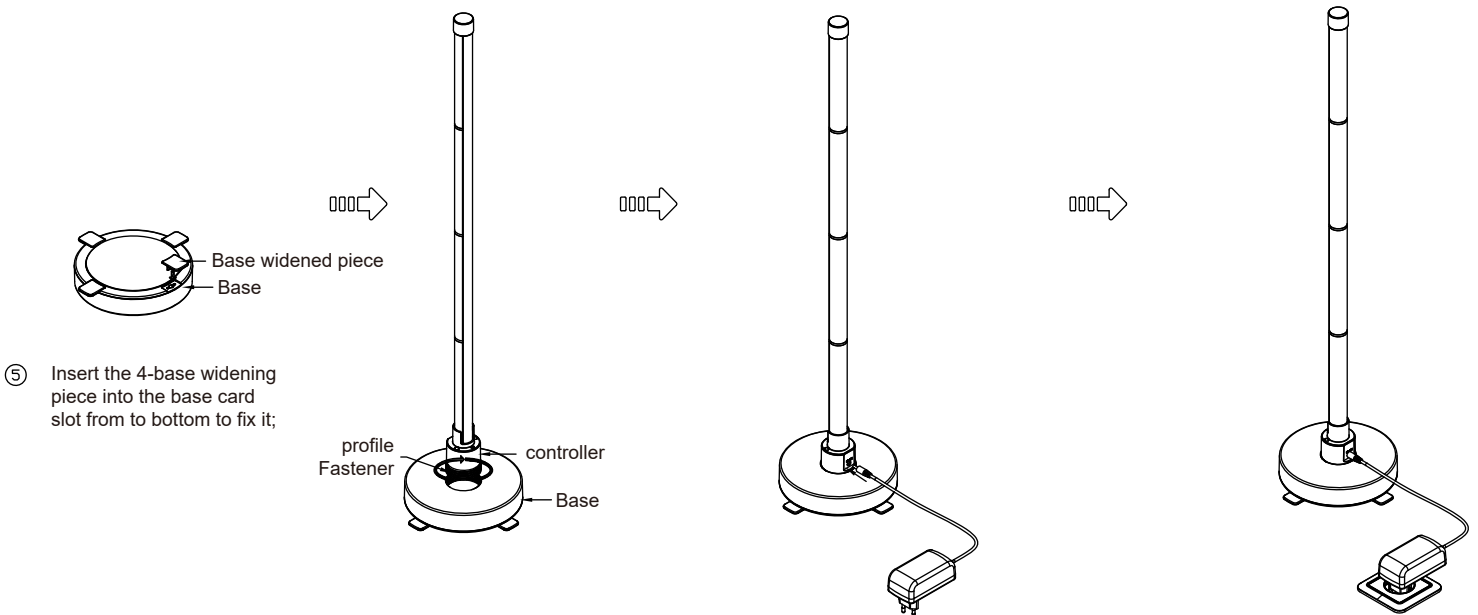


① Fix the Aluminium profile into the Connector.

② Tear off one side of the 3M tape from the TYPE-C male end of the strip, then insert the TYPE-C male end into the female end of the controller and fix it, tear off all the 3M tape on the strip, from bottom to top, Paste the strip into the aluminum groove and fix it;

③ Clip the silicone strip lampshade into the slot of the control box, and then snap in into the aluminum slot from bottom to top to fix it;

④ Insert end-cap;



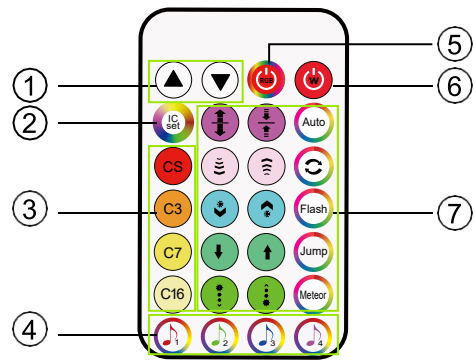
⑤ Insert the 4-base widening piece into the base card slot from to bottom to fix it;

⑥ Align the external thread of the controller with the internal thread on the base and tighten it clockwise;

⑦ Connect adaptor with controller;

⑧ Power-on test;

## Functions introduction diagram



- ① Increase/decrease LED brightness in RGB static or white light mode increase/decrease speed in RGB dynamic mode
- ② IC set to activate the system when set up first time
- ③ RGB static color
- ④ Music mode
- ⑤ RGB light switch
- ⑥ White light switch
- ⑦ RGB phantom display

## WARNING

1. Avoid installing above heat source objects, direct sunlight, areas where airflow and temperature change significantly;
2. Please do not look directly at the LED lights with your eyes for a long time, otherwise it may cause eye discomfort or damage your eyes;
3. Avoid exposing the product to the outdoors, direct rain, and do not immerse the product in water, otherwise it may be short-circuited or damaged;
4. Do not hit the ambient light with sharp objects or rough contaminants, so as not to affect the function and appearance;
5. Press the "IC set" button to activate the system when you find only half of strip is light at the first set up.