

# OPTONICA

---

## USER MANUAL

### Floor lamp



#### Features

- DIY modular assembly
- Remote control
- Multiple color changes
- Multiple mode changes
- High efficiency, energy saving and environmental protection
- Easy to install and versatile

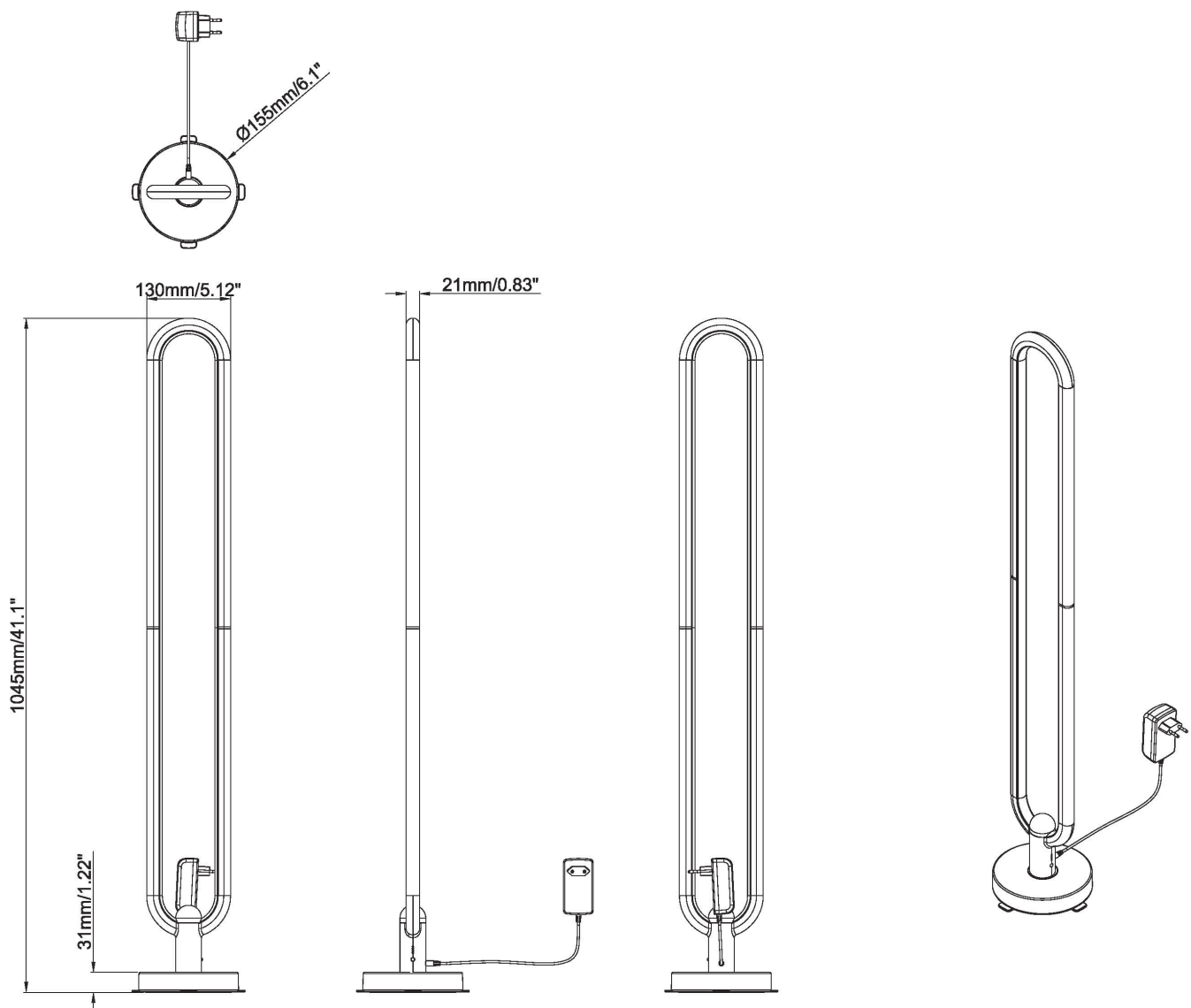
#### Instructions for use

- Refer to the instruction manual to assemble the floor - standing atmosphere lamp kit into a finished lamp, and then power on test;
- The remote control can control a variety of RGB color static changes;
- The white light mode can be independently controlled by there mote control and the brightness can be adjusted;
- The dynamic color change of the ambient light can be adjusted;

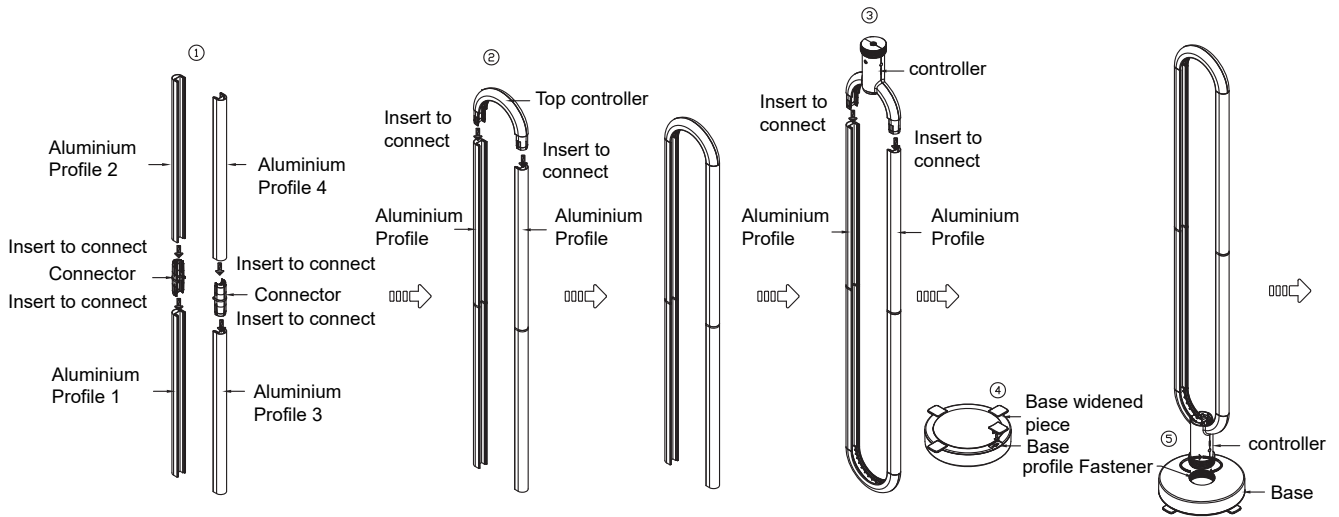
## Technical Parameters

SKU	237
Product Size	130*1045mm
Rated Power	20W
Working Voltage	DC 12V 1.5A
Led Style	5050 RGB
LED Quantity	5050 RGB
Color Temperature	RGB+3000K
Color Rendering Index	>80Ra
Lumen	500lm
Shell Body Material	Aluminum+ABS+Silicon
Storage Environment	-20°C+40°C
Work Environment	-20°C+40°C

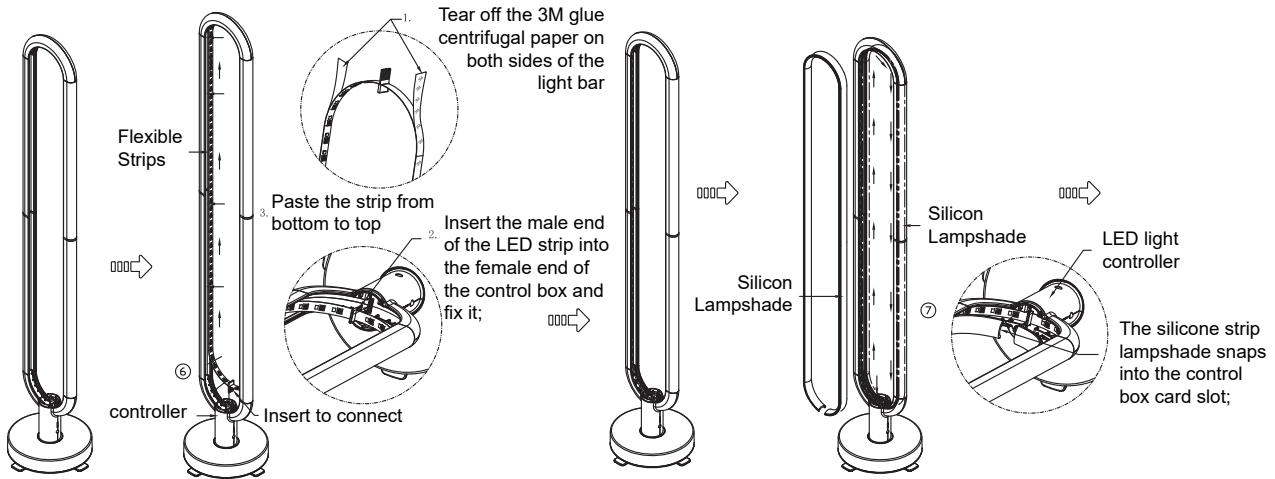
## Product size chart



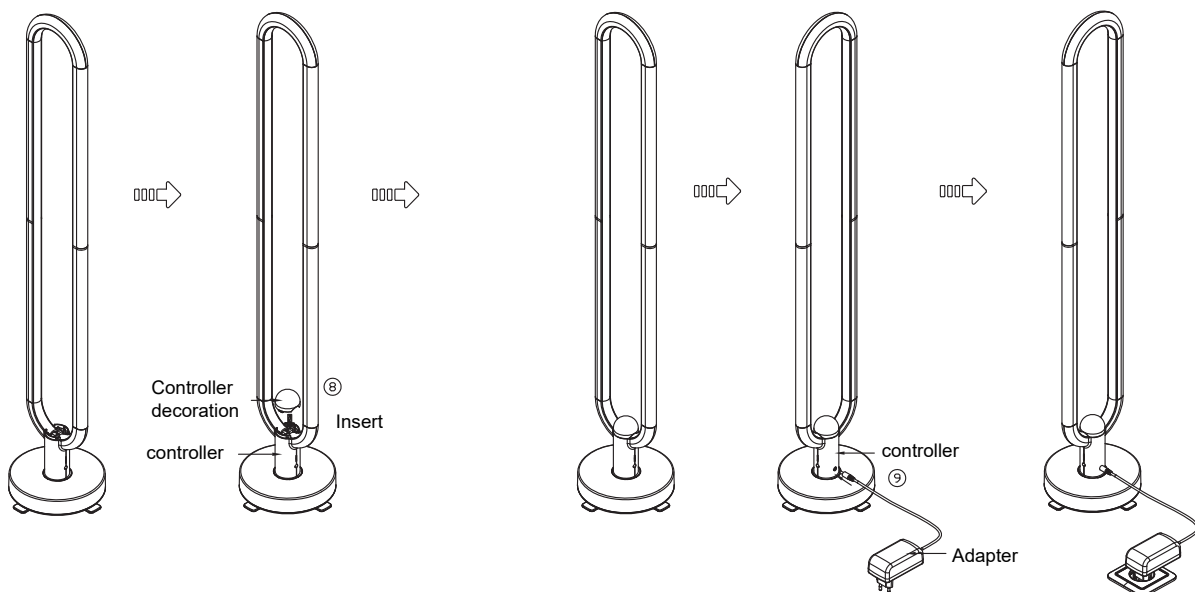
# Installation Instruction



- ① Fix the Aluminium profile into the Connector
- ② Fix the Aluminium profile into the Top Connector
- ③ Insert the aluminum profile into the controller connector to fix it;
- ④ Insert the 4-base widening piece into the base card slot from top to bottom to fix it;
- ⑤ Align the external thread of the controller with the internal thread on the base and tighten it;

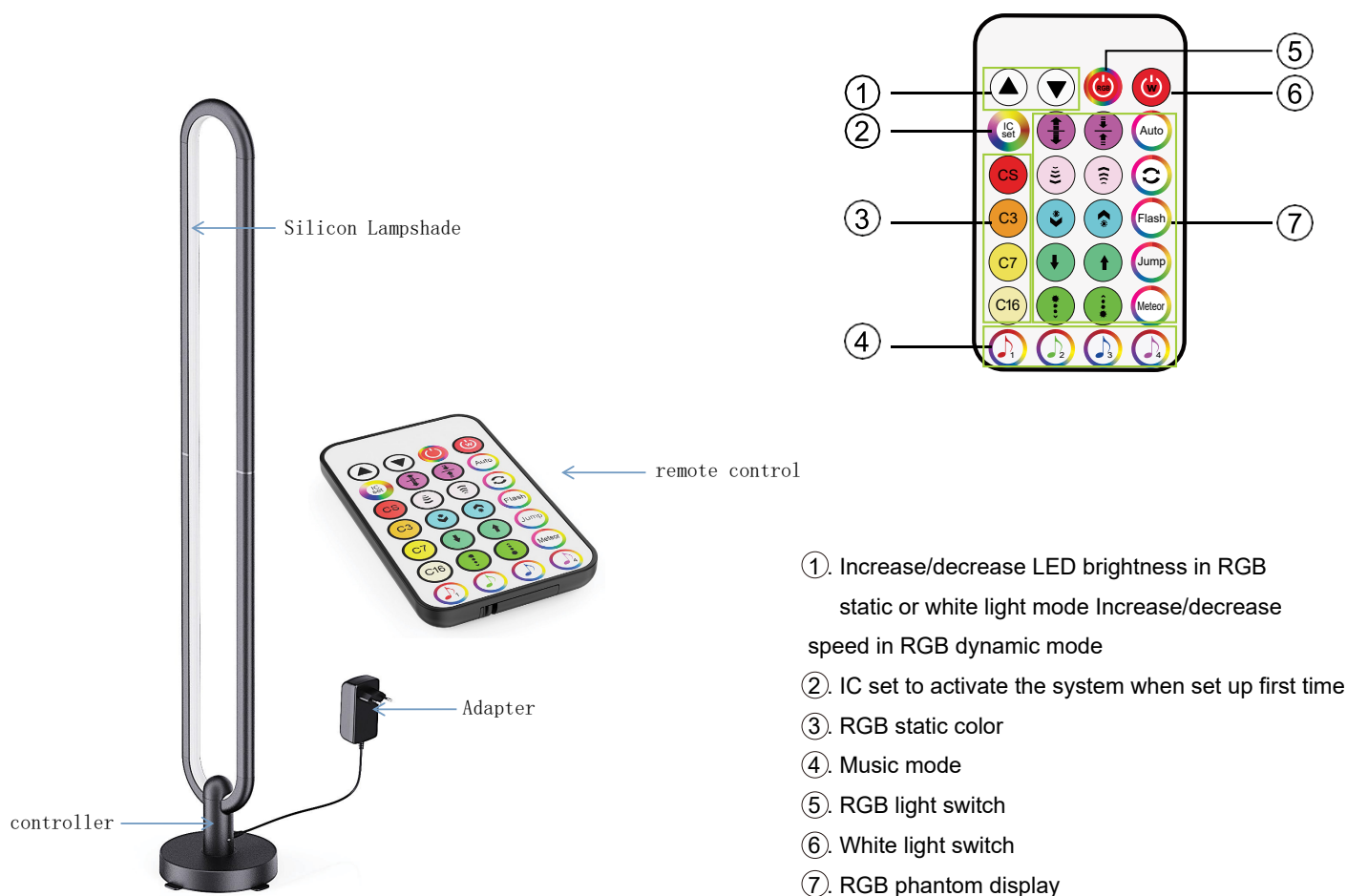


- ⑥ Tear off the 3M glue centrifugal paper on the male end of the strip, and then insert the male end of the strip into the female end of the controller, tear off all the 3M glue centrifugal paper on the strip, and put the strip from bottom to top. Stick it into the groove and fix it;
- ⑦ First snap the silicone strip lampshade into the controller card slot, Then snap into the Profile slot from bottom to top to fix it;



- ⑧ Insert the decorative parts of the controller;
- ⑨ Connect adaptor with controller;
- ⑩ Power-on test;

## Functions introduction diagram



## WARNING

1. Avoid installing above heat source objects, direct sunlight, areas where airflow and temperature change significantly;
2. Please do not look directly at the LED lights with your eyes for a long time, otherwise it may cause eye discomfort or damage your eyes;
3. Avoid exposing the product to the outdoors, direct rain, and do not immerse the product in water, otherwise it may be short-circuited or damaged;
4. Do not hit the ambient light with sharp objects or rough contaminants, so as not to affect the function and appearance;
5. Press the "IC set" button to activate the system when you find only half of strip is light at the first set up.