

USER MANUAL

Scope

The dimmable LED luminaire is designed for decorative and art lighting in domestic environment.

Installation regulations

Install the fitting only after carefully reviewing the installation manual. Only qualified electrician should install the fitting. When leaving your home, always power down the unit from the main switch on the wall. After voltage hypertension or temporary power cuts, the unit may turn itself in.

ATTENTION !

The manufacturer reserves the right to make design changes without deteriorating the technical capabilities and do not impact negatively the product without this necessarily be reflected in the instruction manual and explicitly informing the user.

Safety requirements

Intalling or maintaining the product should only be undertaken when the unit is completely powered off. When unpackaging make sure that the product and the power supply have not been damaged during transit. Periodically verify the cables state. Never connect the product to faulty electrical network. Always connect using luster terminal. Make sure that all connections are protected against moisture. In any form of malfunction including but not limited to short circuit, sparks, melting, fire etc. power down the network. Never extinguish fire using water or flammables but substances which are specially designed for such purposes. In the unlikely event of such occurrence - contact the vendor. This fitting contains unchangeable lighting source. When the latter reaches its end of life cycle - the entire fitting must be replaced. The product cable cannot be replaced. If faulty - the entire unit must be disposed of. This product is only intended for indoor use without being exposed to any damp or heat sources

FORBIDDEN !

- Product installation or maintenance when the unit is not powered off completely, loose terminals or mechanical damages.
- Design changes of any sort
- Operating this unit in a damp environment.
- Product installation on any flammable surfaces.
- Cable change.

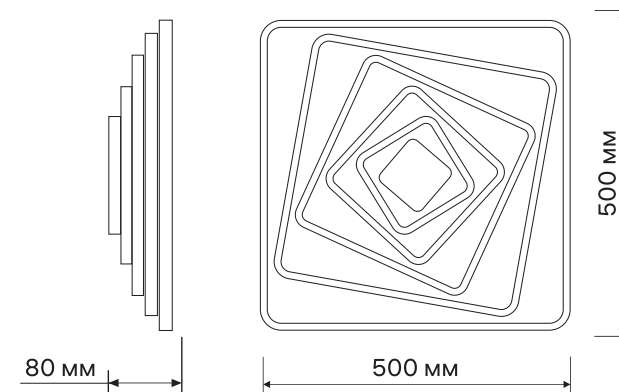
Transport and warehousing:

Only in original packaging when observing the safety precautions and ensuring there is no risk of mechanical damages or rain. Always keep in premises with natural ventilation with temperature ranges of -20°C upto +40°C humidity factor not exceeding 800%.

Recycling and environment protection

This fitting does not contain any dangerous substances. When the product reaches its end of life cycle, it must be disposed properly without being mixed with the everyday garbage.

LED Ceiling Square SKU: 2929



EN

1. Product:

LED dimmable fixture with remote control

2. Purpose and scope:

Decorative and art indoor lighting

3. Maintenance:

Always keep in the original packaging. transport in covered and isolated vehicles, does not require specialized disposal.

4. Safety operations:

Do not dispose of in regular garbage, keep from damage and damp.

5. What to do when malfunction or damage has been discovered:

In case of any fault (including but not limited to) short circuit, sparks, melting, fire etc immediately switch off the power supply. Do not put off with water or flammable substances. Only use speicalized liquids intened to fight fire. After the danger has been eliminated - contact the vendor.

6. Month / Year of product manufacturing, operation period, warranty limit:

The manufacturing date is clearly indicated on the product itself (or on the packaging) according to the batch. : 00.00 (first two digits represent the manufacturing month, the second two digits are the year of the manufacturing. Operational limit - 5 years . Warranty limit - 12 month from the month of purchase.

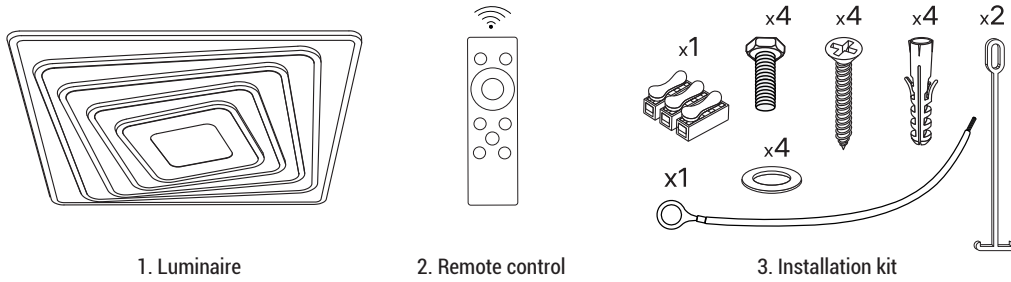
7. Certifications:

All products bearing the Optonica Led brand are manufactured and homological in accordance with the regulatory standards, current technical documenation and rules compulsory for operations.

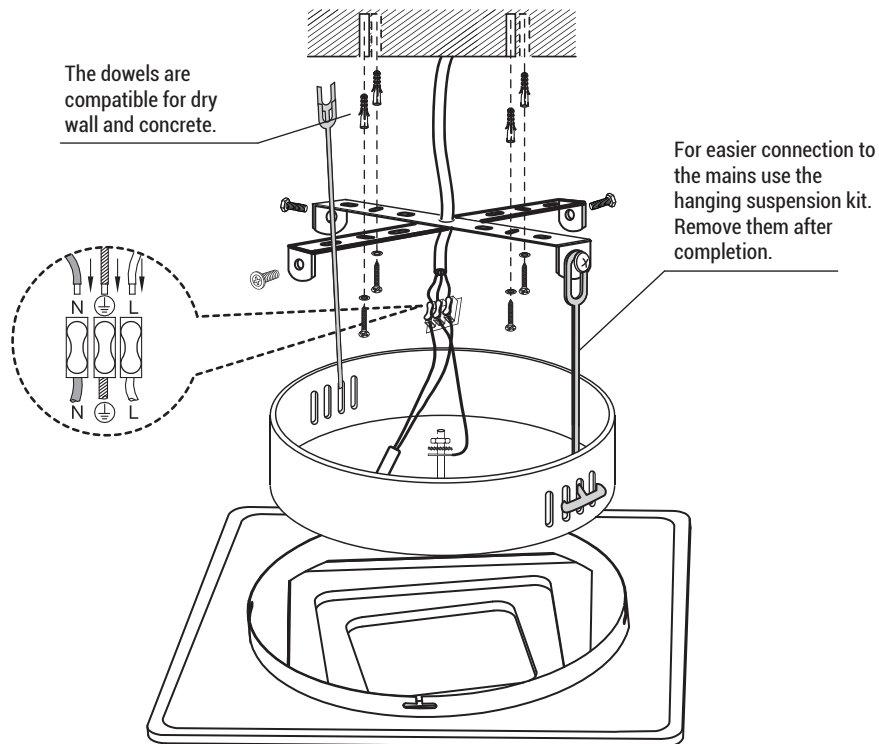
8. The product contains:

Fitting, remote controller, installation kit and instruction manual.

Contents

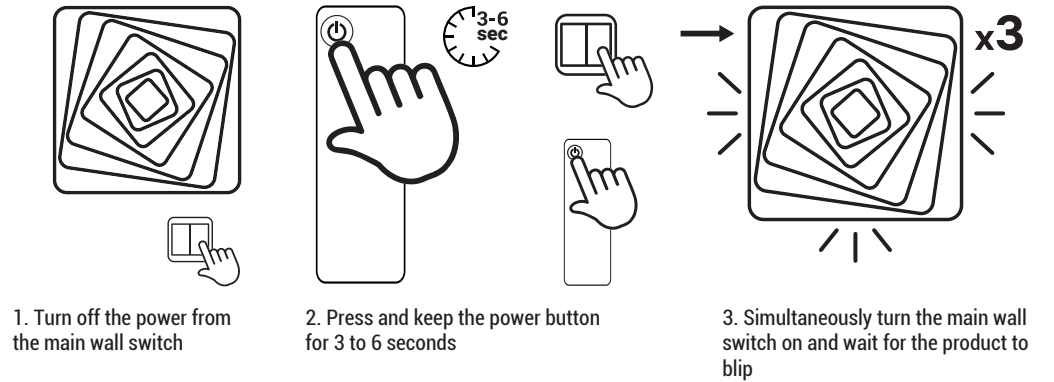


Installation instructions

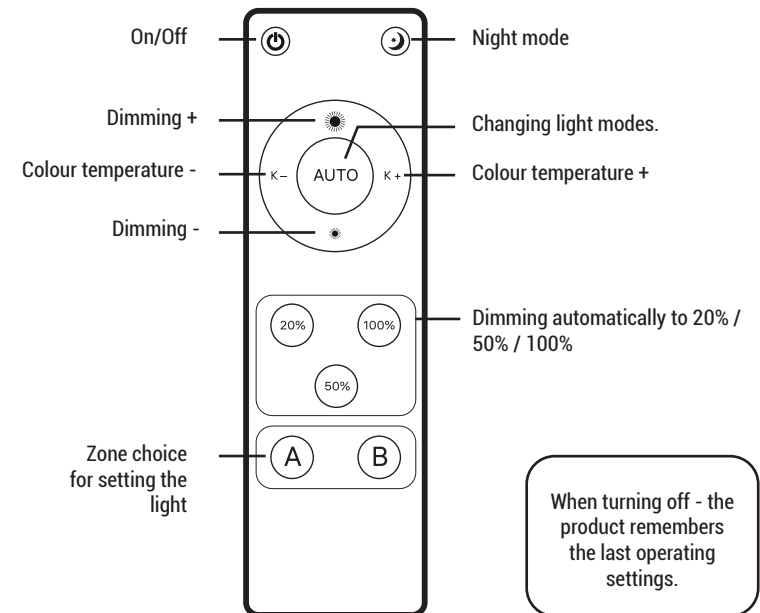


Connect the power cables to the terminal. If you are installing the unit on a metal surface, you need to earth it.

Activating the remote control



Setting and control



When turning off - the product remembers the last operating settings.

The remote control requires two AAA batteries (not included in the set).