

OPTONICA
Comfort

User Manual

SKU:757



IMPORTER: Prima Group 2004 LTD, Bulgaria, 1784 Sofia,
Mladost 1, bl. 144, Ground Floor; Phone: +359 2 988 45 72;

Copyright

All rights reserved. No part of this publication may be reproduced, transmitted, transcribed, stored in a retrieval system or translated into any language or computer language, in any form or by any means, electronic, mechanical, magnetic, optical, chemical, manual or otherwise, without the prior written permission of this company.

Trademarks

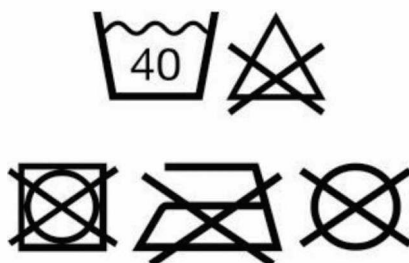
All other logos, products, or company names mentioned in this manual may be the registered trademarks or copyrights of their respective companies, and are used for informational purposes only.

Technical support

If any problems occur and this manual cannot provide the solution you need, please contact a local retailer or local authorized dealer.

Cleaning cloth laundry instructions

- Washing under 40°C (104°F) ◦
- Do not bleach.
- Do not tumble-dry.
- Do not iron.
- Do not dry clean.



Important Safety Precautions

Read all instructions before operating this device.

WARNING

1. Fasten the safety rope and tie to an indoor fixture before operating the device.
2. Check if the safety rope is broken or the knot is loose before operating the device.
3. A power cord must be used for the 757 to function properly.
4. For windows with no balcony, a warning area must be established on the ground below to prevent people from coming near it.
5. The battery must be fully charged (green light ON) before using.
6. Do not use on rainy or humid days.
7. Turn power on before putting device onto glass.
8. When placing the appliance onto glass, make sure it sticks to the surface before removing the supporting hand.
9. Remove the device before turning the power off.
10. Do not use on frameless glass.
11. Make sure to put the cleaning ring onto the cleaning wheel correctly to avoid leakage.
12. Do not spray or pour water onto the appliance.
13. Prohibit children from using this device.
14. Remove any obstructions on the glass. Do not use on cracked glass. Reflective or coated glass may be scratched during operation by dirt on the glass.
15. Keep hair, loose clothing, fingers, and all body parts away from the openings and moving parts.
16. Do not use in areas containing flammable or combustible liquids or gases.

Product Description

757 is a glass-cleaning robot with a vacuum motor inside that uses suction to stick to glass surfaces. An embedded UPS (Uninterrupted Power System) can prevent the robot from falling off the window even when the power is off.

757 has two specially-design cleaning wheels that can freely traverse window surfaces, and even walls. The easily-replaceable lint-free cloth is used on both cleaning wheels. Micro-fiber cloth is used to attain superior glass cleaning.

757 has AI Technology that can calculate paths, auto-detect window edges, and auto-clean entire windows. It also features a mode for manual operation.

Specifications

Product size	295mm x 148mm x 120mm (LWH)
Product weight	940g
Gift box size	300mm x 234mm x 140mm (LWH)
Gift box total weight	2.15Kg

Input Voltage	100~240VAC, 50Hz~60Hz
Adapter output	24V/3.75A
Power consumption	80W
AC power cord length	1.0m
DC power cord length	4.0m
Safety rope length	4.5m
Battery	Li-Po, 14.8V
Battery working time	20 minutes
Battery life	2 years
Cleaning speed	4 min/square meter (Cleaning the entire area twice)
Maximum cleaning area	Height: 6 meters Width: 5 meters

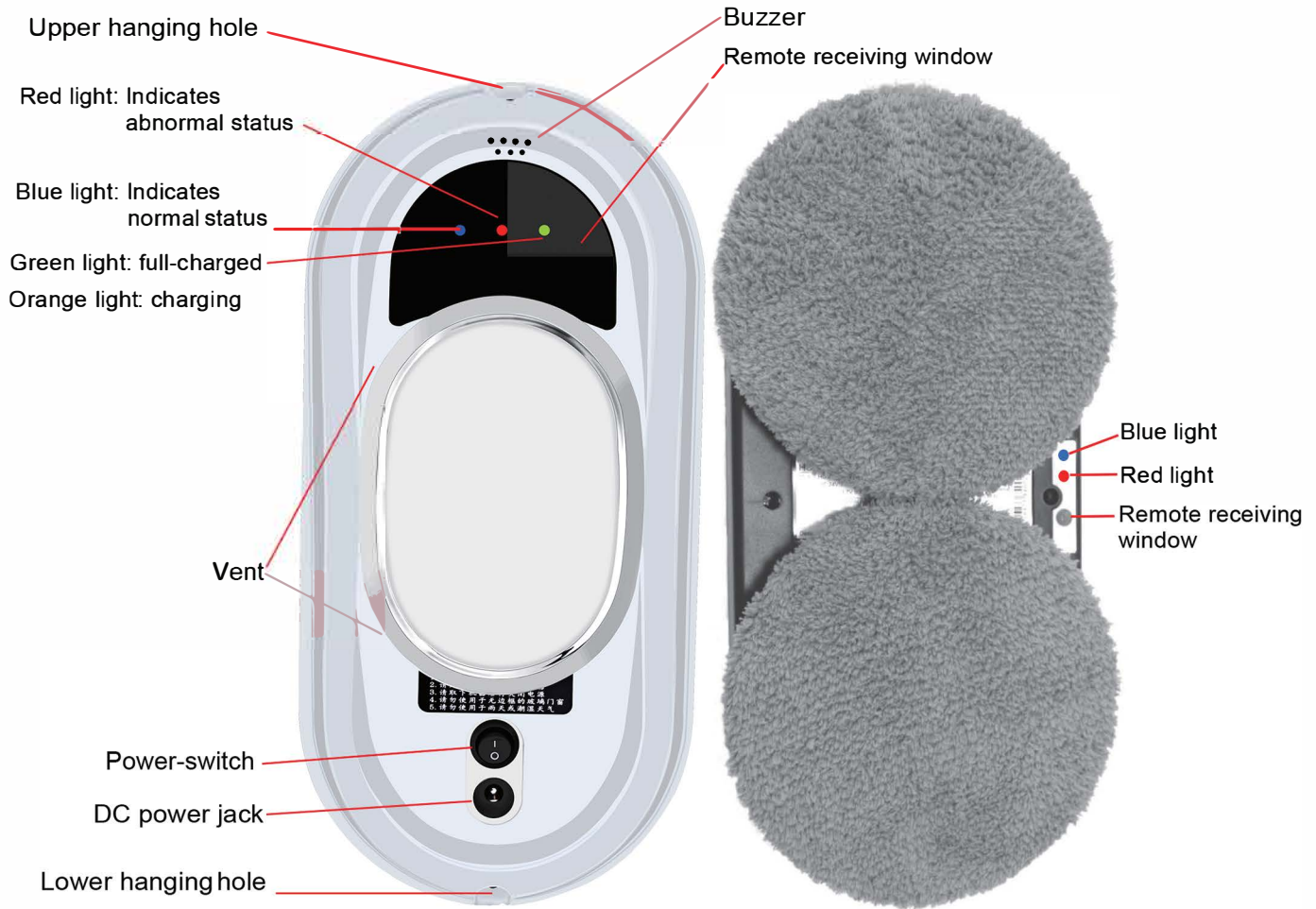
Product and accessories

- Device x 1
- Remote controller x 1
- Adapter (100~240VAC, 50~60Hz) x 1
- AC power cord x 1
- DC power extension cord (4 meters) x 1
- Cleaning cloths x 10
- Cleaning rings x 4
- User manual x 1

Product features

- Designed for any thickness glass
- AI Technology V2.0
- Cleaning speed: 4 min/m².
- 3 kinds of automatic operation modes for cleaning the entire window
- Stops automatically upon completion of cleaning.
- Embedded UPS (Uninterrupted Power System)
- Anti-falling control algorithm
- Auto-detects edges of window
- Microfiber cloth
- High-strength safety rope (tensile strength 150Kgf) and buckle
- Remote control
- Table cleaning mode
- Power consumption : 80W
- Input voltage: 100~240VAC, 50~60Hz

Getting to know the device



Safety rope & buckle

- A power cord must be used for the 757 to function properly.
- How to put the device onto glass:
 - (1) Turn power switch on. Make sure fan is running.
 - (2) Put device onto glass and keep 10cm away from the window frame.
 - (3) Check if device is sticking to the glass before releasing it.

- How to remove the device from glass:
 - (1) While device is running, hold the safety rope with one hand and take device down from glass with the other hand.
 - (2) Remove the device to a safe area, then turn it off.

- Safety rope and buckle:
 - (1) Before using, check to see if the safety rope is broken or if the knot is loose.
 - (2) Fasten the safety rope and tie to an indoor fixture before operating.

- UPS (Uninterrupted Power System) function:
 - (1) The UPS function will be enabled automatically when no electric power is supplied. The backup time of this UPS is 20 minutes.
 - (2) If no electric power is supplied, the device will stop automatically, sound an alert, and flash a red light. The user should take the device down from the glass as soon as possible.
 - (3) The safety rope can be used to pull the device back. Gently pull the safety rope at an angle close to the glass to prevent it from falling off.

- Make sure the battery is fully charged (green light ON) before use:
 - (1) First, turn off the power switch on the device. Plug it into a power source. Orange light ON means charging.
 - (2) Green light ON means the battery is fully charged.

- Other things to pay attention to:
 - (1) Do not use on frameless glass.
 - (2) Make sure to put the cleaning ring onto the cleaning wheel correctly to avoid leakage.
 - (3) Do not use it on rainy or humid days.
 - (4) For windows with no balcony, a warning area must be established on the ground below to prevent people from coming near it.

LED indication

Situation	LED indication
1. Battery charging	Orange LED is ON
2. Battery charged	Green LED is ON
3. No electrical power	Red LED flashing Repeated beeping sound
4. Hardware error	Red-LED flashing Blue-LED flashing with "error number"
5. Vacuum pressure too low	Red-LED flashes once Beep
. Air leakage while operating	Red-LED flashes once Beep

How to clean the glass

Step I: "Dry Clean" first

Use a clean and dry cleaning cloth to clean dust and dirt from the glass.

- If there is water or detergent on the cloth or glass, the water or detergent will mix together with the dust or dirt to become mud, making cleaning results bad.
- **Using HCR-01 on sunny days or days with low humidity for best results.**
- **Don't use HCR-01 on rainy or high humidity days, otherwise it will produce white streaks. The white streaks are water molecules. This is the same thing that can happen when manually cleaning with a cloth.**

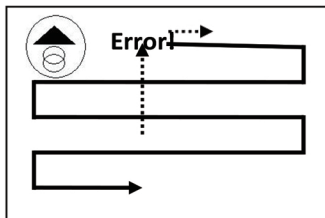
Step II: Use a clean and dry cleaning cloth. Keep the cleaning cloth on the upper wheel clean and dry. Spray a little detergent (1~2 sprays) on the lower wheel's cleaning cloth, but not too much (if too wet, the machine can't move well), then clean the glass again.

Remote controller

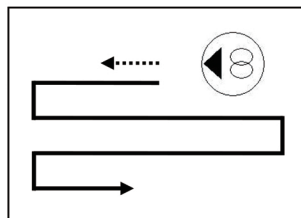
The device can be remote controlled from the front and back sides.



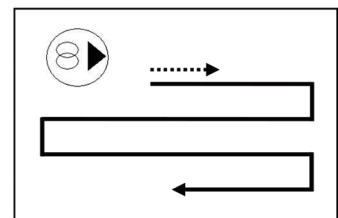
	Automatically move up then down		Manually move up
	Automatically move left then down		Manually move down
	Automatically move right then down		Manually move right
,	Stop		Manually move left
	Start/Stop		



Auto up then down



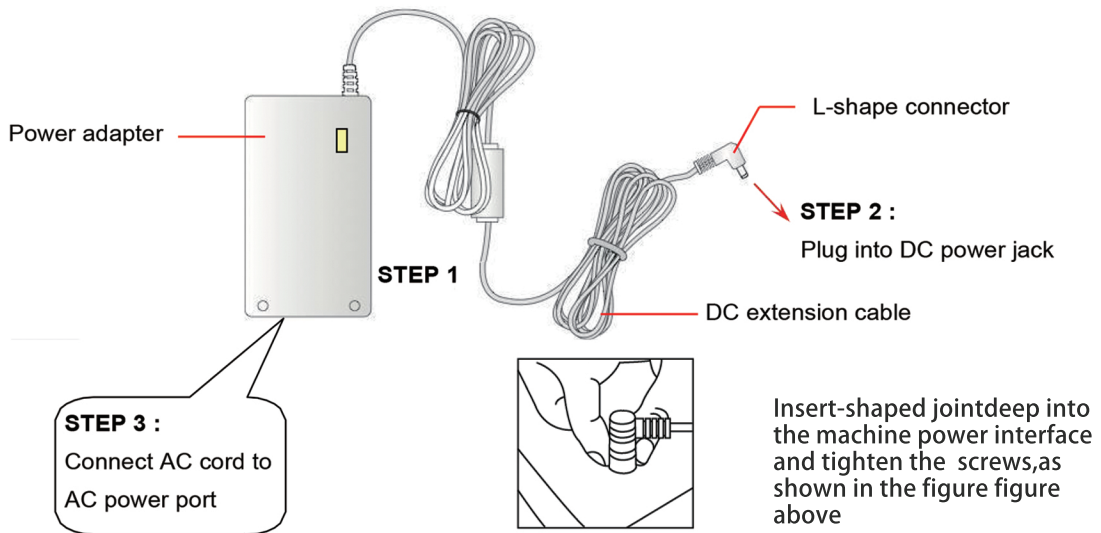
Auto left then down



Auto right then down

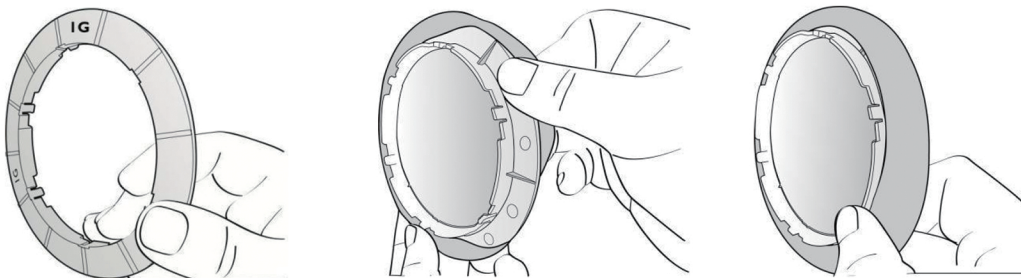
※ If you have to replace the battery, just pull down the battery cover.

Power adapter/DC extension cable



Using the cleaning ring and the cleaning cloth

1. Cover cleaning ring with cleaning cloth.


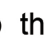




2. Put cleaning ring onto cleaning wheel correctly (snap the 6 latches) to avoid leakage.





Frequently asked questions (FAQ)

Q1:HCR-01can't start up and it sounds an alert at the beginning of the self-test. Ans: It means that there is too much or too little friction. Please check:




- (1) Whether the cleaning cloth is too dirty.
- (2) Glass stickers and window film have a friction factor that is too low.
- (3) If the window is cleaned many times, the glass surface will become very slippery.
- (4) The glass surface will become slippery if cleaned several times in a low humidity environment such as in air-conditioned room.
- (5) When starting up the device (pressing , or  or ) , keep it 10cm or more away from the window frame to prevent the device from making an incorrect assessment.

Q2: TheHCR-01slips and cannot detect the upper frame of window in “Auto Up then Down”() mode.

Ans: Press  key and switch to  or  auto mode.

Q3:HCR-01 cannot finish cleaning the whole window and stops in the middle area. Ans: Press  or  auto mode to continue cleaning.

Q4:HCR-01slips and can not climb up to the window frame.

- Ans: (1) The friction factor is too low and may be caused by glass stickers or window film on the glass.
- (2) The cleaning cloth might be too wet.
 - (3) If the window is cleaned many times, the glass surface will become very slippery.
 - (4) The glass surface will become slippery if cleaned several times in a low humidity environment such as in air-conditioned room.
 - (5) When starting up (press , or  or ) , keep the device 10cm or more away from the window frame to prevent it from making an incorrect assessment.

Q5:HCR-01 does not move smoothly, or it moves irregularly.

- Ans: (1) Cleaning cloth is too dirty. Please change out the cleaning cloth for a clean one.
- (2) Glass surface has different friction factor areas due to glass stickers, window

film, and so on. Please limit use the 757 to certain areas of the window. (3) The screw of the cleaning wheel might have become loose. Just tighten it.

Q6: After cleaning, a circular mark is left on the glass.

Ans: Cleaning cloth is too dirty. Please change out the cleaning cloth out for a clean one and clean again.

Q7: What to do if HCR-01 stops due to a power outage?

Ans: (1) User can pull HCR-01 back with safety rope. Gently pull the safety rope at an angle close to the glass to prevent it from falling off the glass.

(2) Switch the power switch to "off".

(3) Check whether there is a poor connection or broken cord.

Q8: What to do if 757 unexpectedly stops and the red light is flashing, with no alarm sounding?

Ans: (1) User can move 757 to safe area by remote control, or pull 757 back with safety rope. Gently pull the safety rope at an angle close to the glass to prevent it from falling off the glass.

(2) Switch the power switch to "off".

(3) Check whether there is air leakage caused by a gap or uneven window frame.

Q9: When the power switch is turned on, the FAN does not rotate, and no alarm sounds.

Case	LED signal	Situation
1	Blue: flash Orange: on Red: off No alarm	It means battery charge is too low. Wait for battery to fully charge (green light is lit). If machine still can't be used after charging for 8 hours, the battery should be changed.
2	Blue: flash Red: flash No alarm	Machine hardware failure. Please contact a local retailer or local authorized dealer for repairs.

Q10: If HCR-01 can't auto-stop at bottom of window when it finishes cleaning.

Ans: Press  key to stop machine.

Safety information about power adapter/battery

- Use only the power adapter supplied with this device. Use of other types of power adapters will result in malfunction and/or danger.
- Please use a proper electrical outlet and make sure no heavy objects are placed on the power adapter or the power cord.
- Allow adequate ventilation around the adapter when using it to operate the device. Do not cover the power adapter with objects that will reduce ventilation and cooling.
- Do not use the adapter in a humid environment. Never handle the adapter with wet hands.
- Connect the adapter to a proper power source. The voltage requirements are listed on the adapter.
- Do not use a broken adapter, power cord, or plug.
- Do not attempt to service the adapter. There are no service parts included. Replace the whole unit if it is damaged or exposed to high moisture. Consult your HCR-01 dealer for help and maintenance.
- The battery used in this device may present a risk of fire or chemical burn if mistreated. Do not disassemble, short the contacts, heat above 60°C (140°F), or incinerate.
- If you have to dispose of old equipment, please take it to the local recycling center for recycling electrical and electronic parts.

General safety information

- Retain the safety and operating instructions for future reference.
- Follow all operating and use instructions.
- Do not expose your device to rain or excess humidity, and keep it away from liquids (such as beverages, faucets, and so on).
- Avoid exposing your device to direct sunlight or sources of intense light, and keep it away from sources of heat (such as radiators, space heaters, stoves, and so on).
- Do not place the device in the vicinity of strong magnetic fields.
- Keep the device and accessories away from children.
- Product operating temperatures: 0°C~40°C (32°F~104°F) ◦
- Product storage temperatures: -10°C~50°C (14°F~122°F) ◦