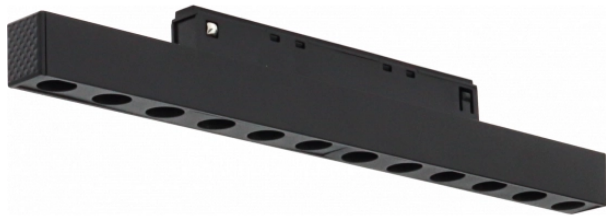
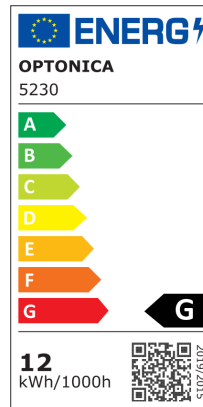


OPTONICA

DATASHEET



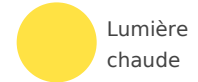
Rail d'éclairage LED magnétique M15 12W



Puissance

12W

Couleur de lumière



Stamps



Technical Specification

Brand	Optonica	Operating Frequency	50-60 Hz
Product Code	LN12-A4	Temperature	-20°C / +40°C
Power	12W	Ra ≥	80
Energy Consumption	12 kWh/1000h	Life span	25 000 Hours
Input voltage	DC48V	Lumen maintenance at end of service life	70%
Flux	780 lm	Size of product	232x15x18 mm
FLUX per watt	65lm/W	Size of package	37x237x20 mm
Dimmable	No	Size of Box	220x205x255 mm
Correlated Color Temperature	3000K	Items per pack	1
Light Color	Lumière chaude	Items per box	50
EAN Code	3800156652309	Gross weight	0,114 kg
Energy Efficiency Label	G	Net weight	0,089 kg
Beam angle	90°	Series	M15
On/Off Cycles	25 000x	Warranty	2 Years
Material	ALU+PC		