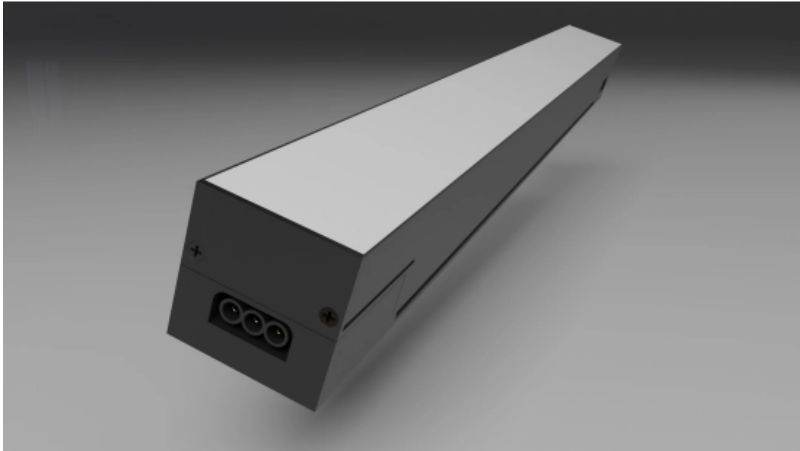


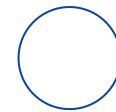
OPTONICA



LED Linear Light 36W 3CCT IP20 - LINKABLE

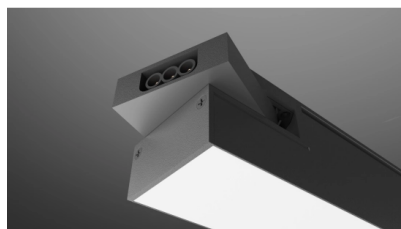
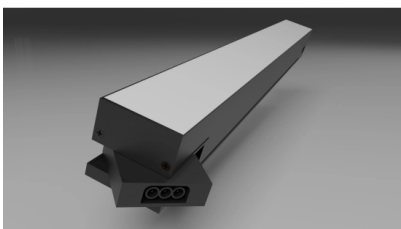
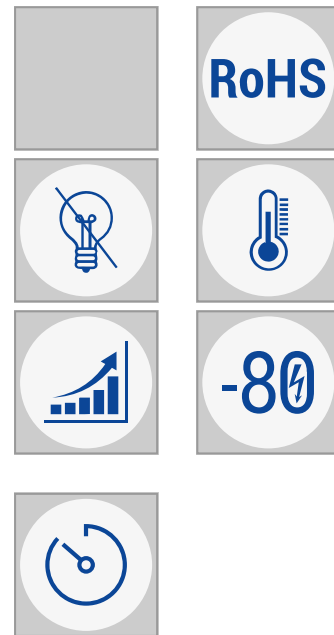
Power **Light color**

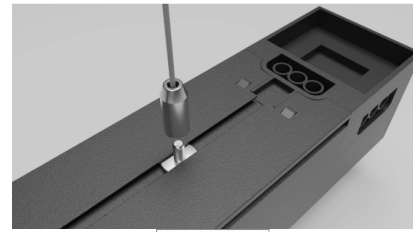
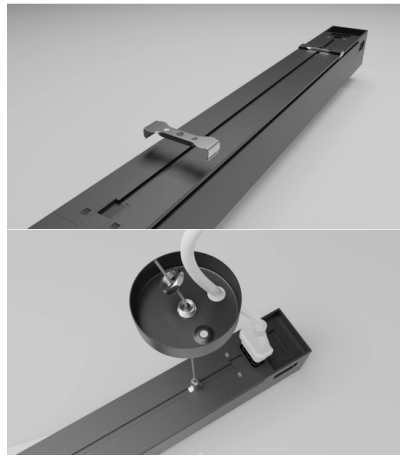
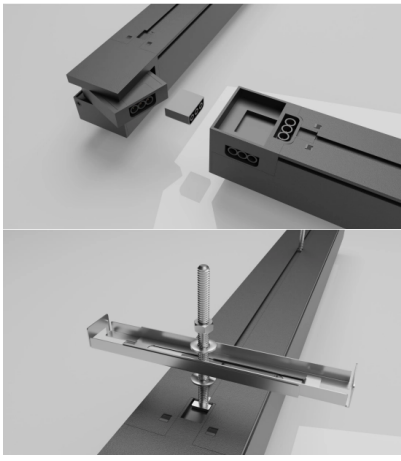
- 36W



CCT

Stamps





Technical Specification

| | |
|-------------------------------------|-------------------|
| Catalog Number | 16762 |
| Brand | Optonica |
| Product Code | LN36-A2 |
| Power | 36W |
| Energy Consumption | 36 kWh/1000h |
| Input voltage | AC170-265V |
| Flux | 3600 lm |
| FLUX per watt | 100 lm/W |
| IP | 20 |
| Dimmable | No |
| Correlated Color Temperature | 3000K/4000K/6000K |
| Light Color | CCT |

| | |
|---|---------------|
| EAN Code | 3801057167626 |
| Energy Efficiency Label | E |
| Beam angle | 120° |
| On/Off Cycles | 25 000x |
| Instant On | 0.1s |
| Material | ALU+PC |
| Operating Frequency | 50-60 Hz |
| Temperature | -20°C / +40°C |
| Ra ≥ | 80 |
| Life span | 25 000 Hours |
| Lumen maintenance at end of service life | 70% |
| Size of product | 900x55x55 mm |
| Size of package | 63x59x955 mm |
| Items per pack | 1 |
| Items per box | 20 |
| Color Of The Shell | Black |
| Warranty | 2 Years |