

# OPTONICA



**Bande LED 2835**  
**24V Non Étanche**  
**100lm/W 3 Ans de**  
**Garantie**

## Puissance

- 20W/m

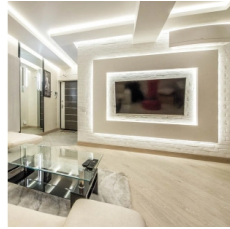
## Couleur de lumière



Lumière neutre

## Stamps





## Technical Specification

<b>Reference catalogue</b>	4422
<b>Brand</b>	Optonica
<b>Product Code</b>	ST2835-A4
<b>Power</b>	20W/m
<b>Energy Consumption</b>	20 kWh/m /1000h
<b>Input voltage</b>	DC24V
<b>Flux</b>	2100 lm/m
<b>IP</b>	20
<b>Dimmable</b>	Yes
<b>Correlated Color Temperature</b>	4000K
<b>Light Color</b>	Lumière neutre
<b>EAN Code</b>	3800156644229

<b>Energy Efficiency Label</b>	E
<b>Beam angle</b>	120°
<b>Power Factor</b>	0.5
<b>On/Off Cycles</b>	25 000x
<b>Instant On</b>	0.2s
<b>Material</b>	Flex PCB
<b>Operating Frequency</b>	50-60 Hz
<b>Temperature</b>	-20°C / +40°C
<b>Ra ≥</b>	80
<b>Life span</b>	25 000 Hours
<b>Color Code</b>	842
<b>LED Type</b>	SMD
<b>LEDs/m</b>	196
<b>Roll</b>	5 m
<b>Lumen maintenance at end of service life</b>	70%
<b>Size of product</b>	10 x 2mm
<b>Gross weight</b>	0,133 kg
<b>Net weight</b>	0,017 kg

**Warranty**

3 Years