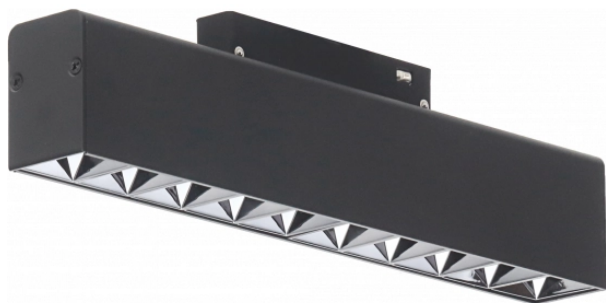
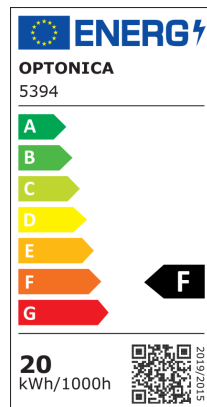


# OPTONICA

## DATASHEET



### Connettori a Leva



Potenza

20W

Colore della luce



Luce naturale

Stamps



RoHS



-80



## Specifiche tecniche

|                              |               |  |                |
|------------------------------|---------------|--|----------------|
| Brand                        | Optonica      | Instant On                               | 0.1s           |
| Product Code                 | LN20-A4       | Material                                 | ALU+PC         |
| Power                        | 20W           | Operating Frequency                      | 50Hz           |
| Energy Consumption           | 20 kWh/1000h  | Temperature                              | -20°C / +40°C  |
| Input voltage                | DC48V         | Ra ≥                                     | 80             |
| Flux                         | 1600 lm       | Life span                                | 25 000 Hours   |
| FLUX per watt                | 80lm/W        | Color Code                               | 840            |
| IP                           | 20            | Lumen maintenance at end of service life | 70%            |
| Dimmable                     | No            | Size of product                          | 270x34x50.5 mm |
| Correlated Color Temperature | 4000K         | Size of package                          | 290x73x38 mm   |
| Light Color                  | Luce naturale | Size of Box                              | 405x335x255 mm |
| Wattage Equivalent           | 100W          | Items per pack                           | 1              |
| EAN Code                     | 3800156653948 | Items per box                            | 20             |
| Energy Efficiency Label      | F             | Gross weight                             | 0,372 kg       |
| Beam angle                   | 24°           | Net weight                               | 0,322 kg       |
| Power LED                    | 20W           | Series                                   | M35            |
| On/Off Cycles                | 100 000x      | Warranty                                 | 2 Years        |